

Technical Service Bulletin



Of Interest ☐ General Manager ☐ Sales Manager ☐ Service Manager ☐ Parts Manager ☐ Service Technicians

May 19, 1971

CAR #: -
D71-9-7

TRUCK:
71DT-9-6

CAR AND TRUCK

The 1970 and 1971 383 C.I.D. 2-bbl. carburetor engines are built with either the cast or forged crankshaft.

The cast crankshaft requires a different front vibration damper and torque converter than the forged crankshaft. Intermixing of these components should not be attempted as severe engine vibration will result. See identification sketches on page 2.

When it is necessary to replace a crankshaft, short engine, vibration damper or torque converter, it is important to first determine the type of crankshaft (forged or cast) the engine was built with. The parts book specifies these parts in two categories.

The cast crankshaft engines are identified by the stamped letter "E" below the build date on the engine cylinder block information pad. The following is an example:

G383
4-24
E

POLICY: INFORMATION ONLY

J. D. MORTON
Manager - Technical Services
U. S. AUTOMOTIVE SALES & SERVICE

(Over)

ENGINE

Cast
Crankshaft

MODELS: All
1970 And 1971
Equipped With
383 C.I.D.
2-Bbl.
Engines

P-1376-C

(THIS BULLETIN IS SUPPLIED AS TECHNICAL INFORMATION ONLY AND IS NOT AN AUTHORIZATION FOR REPAIRS)
REPRINT OF THIS MATERIAL NOT AUTHORIZED UNLESS APPROVED.

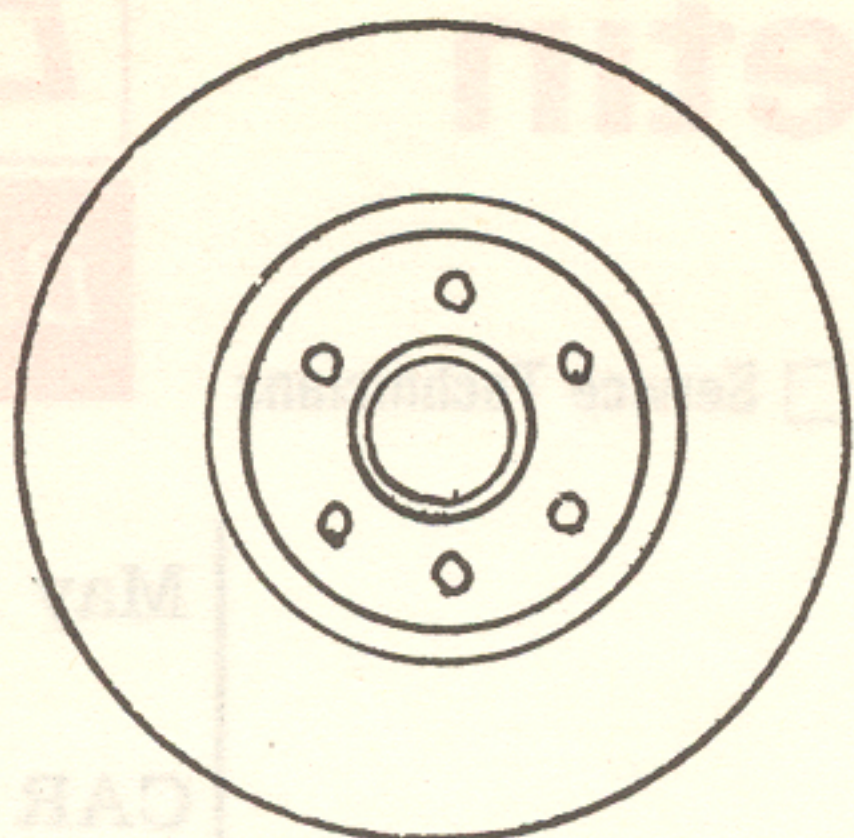
Dodge



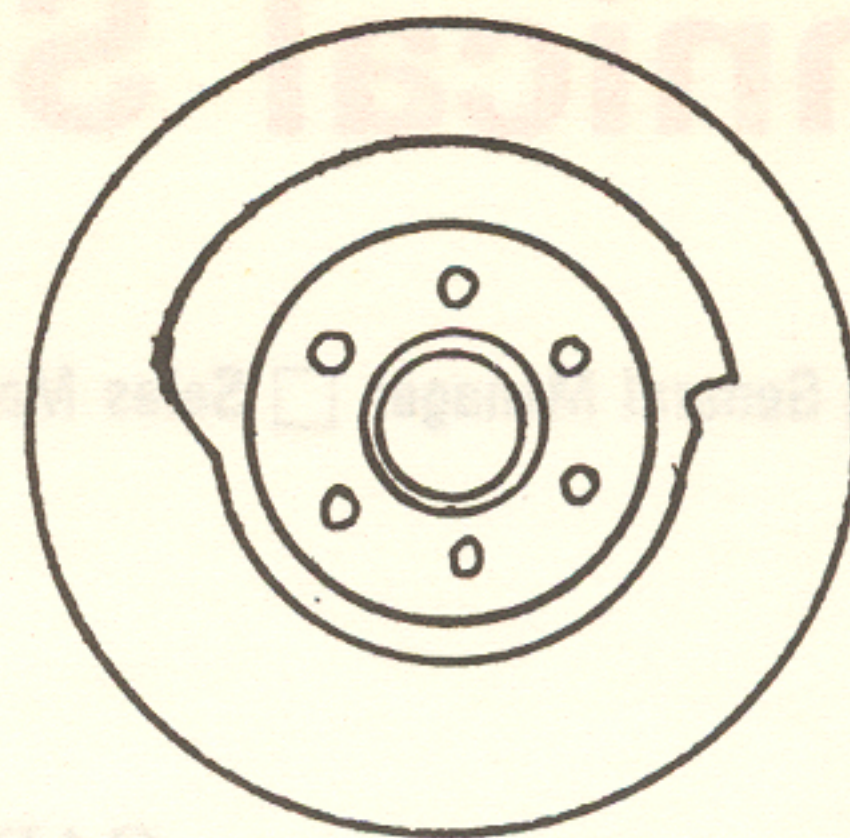
COLT/CHALLENGER/CHARGER/CORONET/DART/MONACO/POLARA

Car #: D71-9-7
Truck: 71DT-9-6

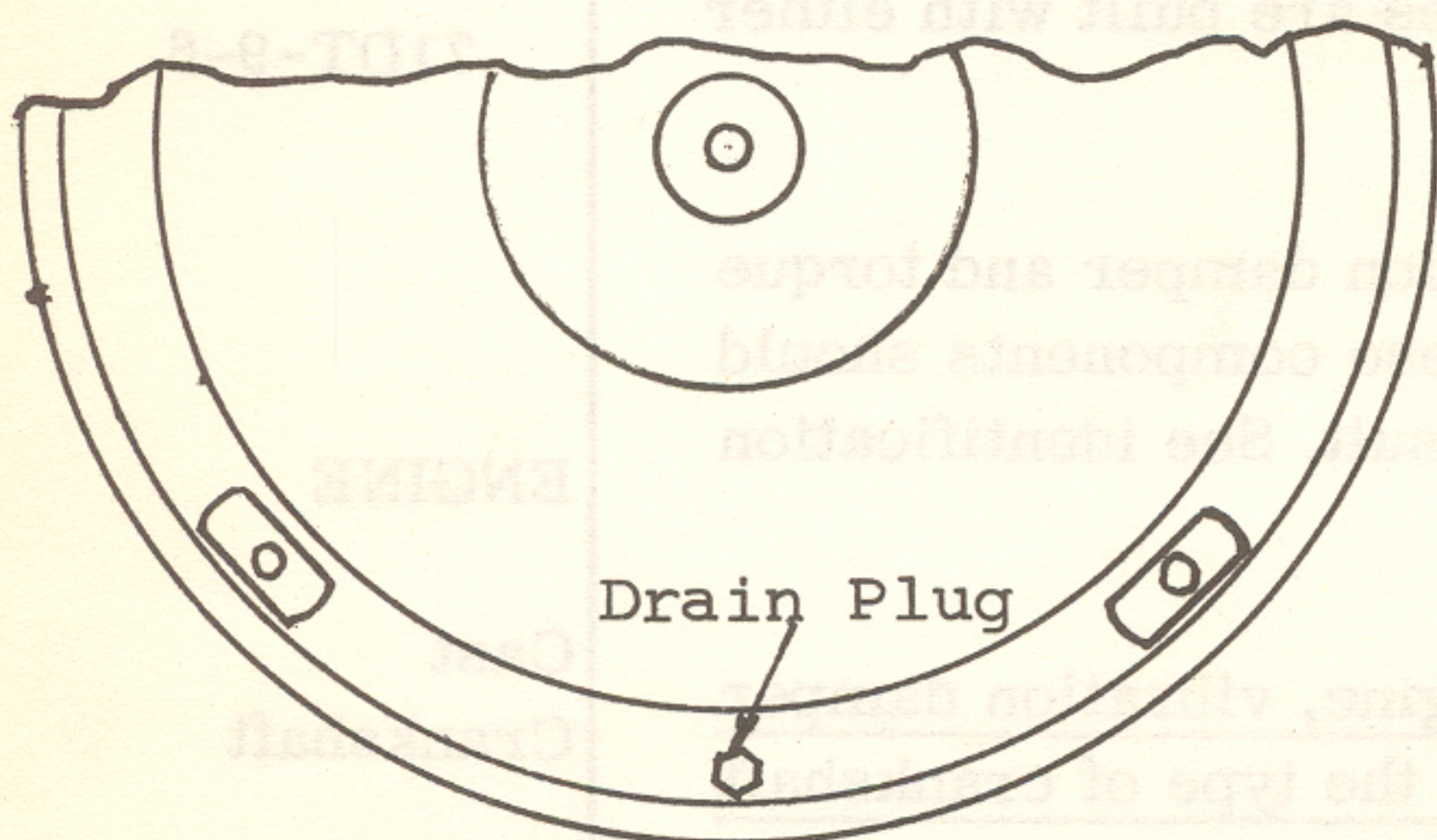
-2-



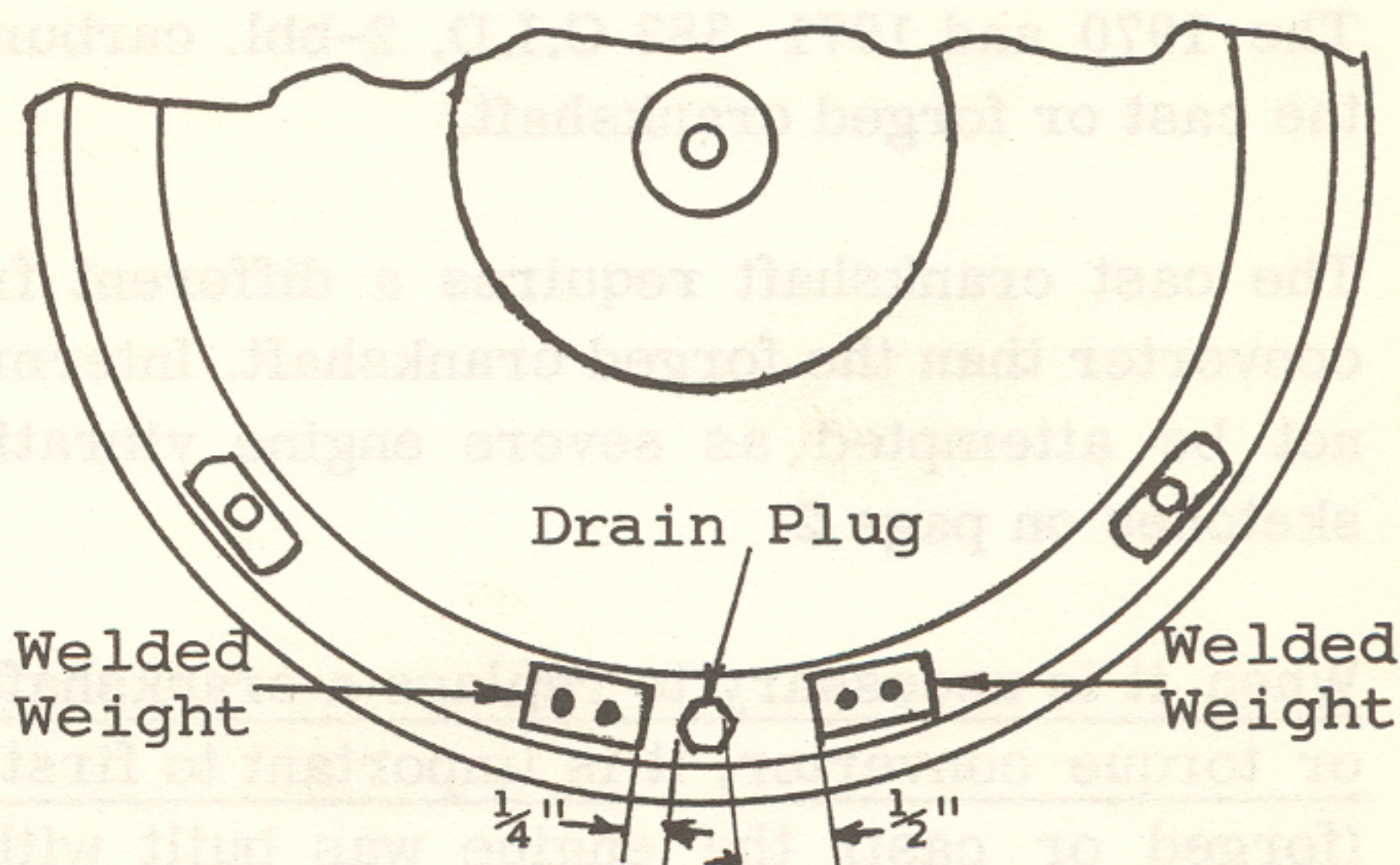
P/N 2658457
FORGED CRANKSHAFT DAMPER



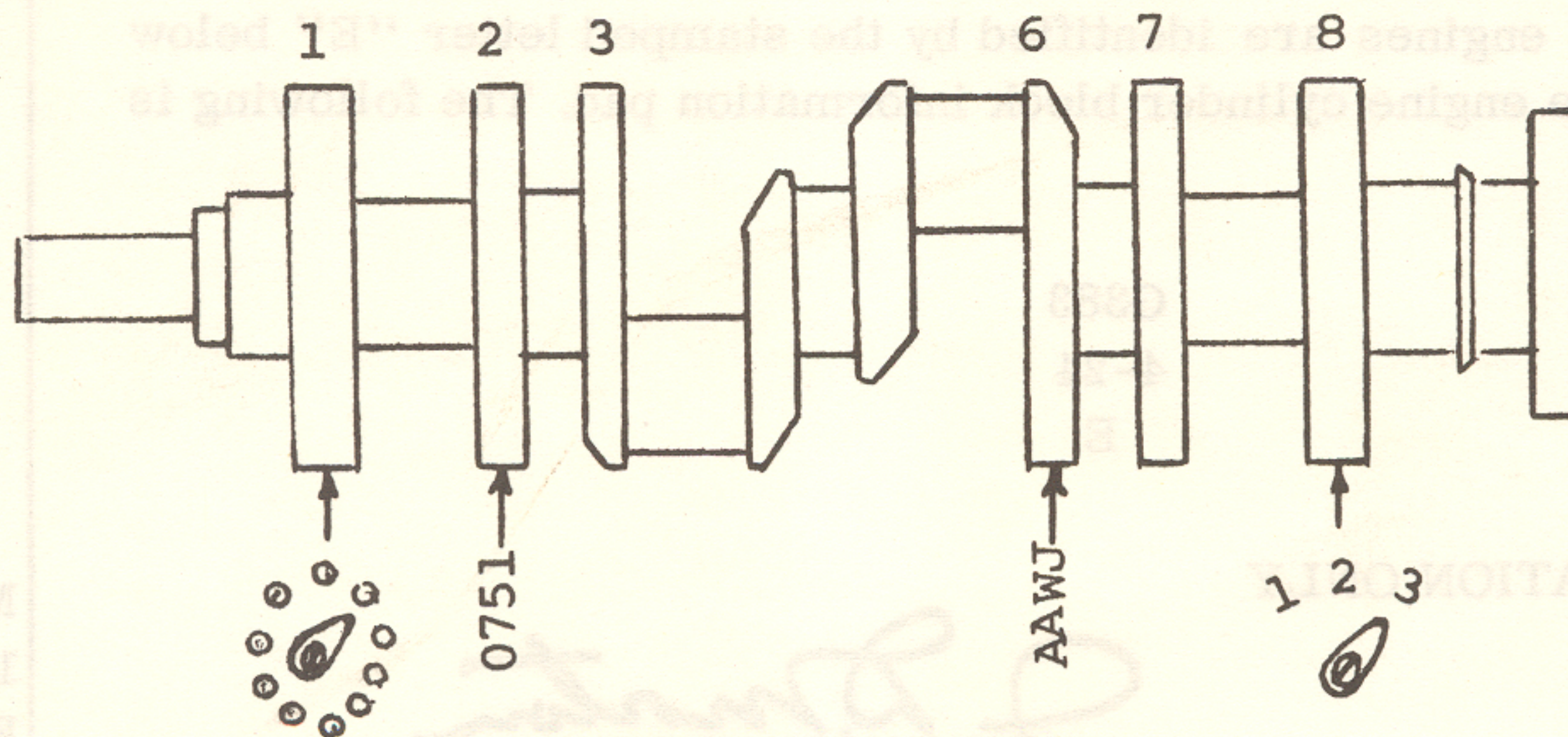
P/N 3577180
CAST CRANKSHAFT DAMPER



P/N 2843586
FORGED CRANKSHAFT TORQUE CONVERTER



P/N 3515282
CAST CRANKSHAFT TORQUE CONVERTER



CAST CRANKSHAFT

- #1 - 10 Dots and arrow indicating cast hour
- #2 - Date cast
- #6 - AAWJ denotes foundry
- #8 - 1, 2, 3 and arrow indicates shift

#2268114 Forged crank has only one circular die mark on #8.

#3462922 Cast crank has clean sharp edges at counter weights, whereas forged crank does not.

383 2-BBL.ENGINE CAST CRANKSHAFT, TORQUE CONVERTER & DAMPER IDENTIFICATION