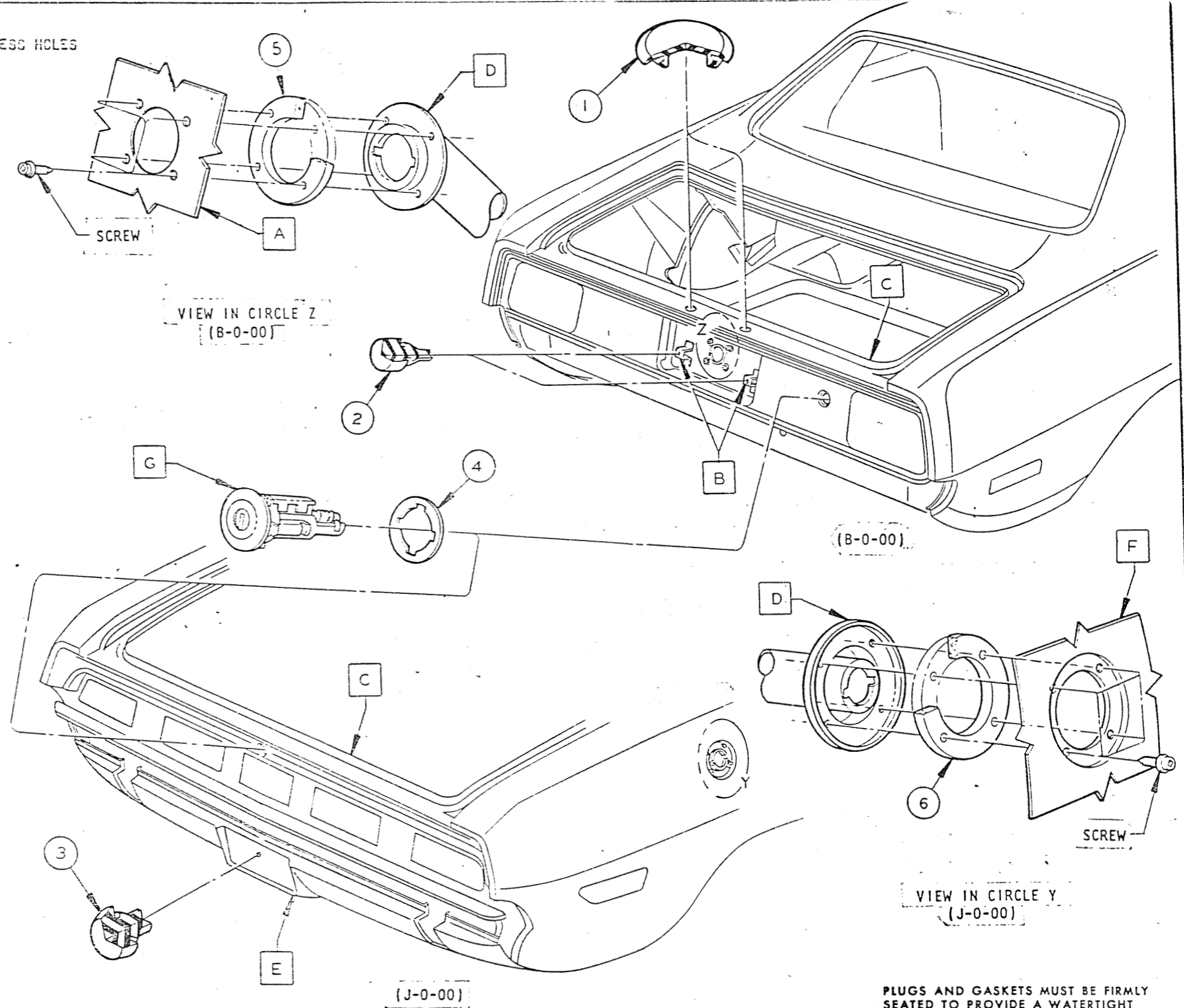


- 1 (B-0-00) INSTALL 1950477 PLUG (PLASTIC 1.25) IN ACCESS HOLES IN C/OUT C. (2 REQ'D-1RT,1LT)
- 2 (B-0-00) INSTALL 1943547 BUMPER-DECK OPENING LOWER PANEL LICENSE PLATE TO C/OUT B (2 REQ'D) (1 RT & 1 LT)
- 3 (J-0-00) INSTALL 2094618 BUMPER-DEFLECTOR LICENSE PLATE TO C/OUT E
- 4 INSTALL 2583860 GASKET-DECK LID LOCK CYLINDER BETWEEN C/OUT C & G
- 5 (B-0-00) ASSEMBLE 2643956 GASKET-FUEL TANK FILLER TUBE CAM BETWEEN C/OUT A&D WITH 6026092 SCREWS AS SHOWN (4 REQ'D)
- 6 (J-0-00) ASSEMBLE 3404524 GASKET-FUEL TANK FILLER TUBE CAM BETWEEN C/OUT F&D WITH 9414724 SCREWS AS SHOWN (4 REQ'D)

- A PANEL-DECK OPNG LWR LICENSE INSERT
- B BRKT-DECK OPNG LWR PNL LICENSE PLATE INSERT PNL BUMPER
- C PANEL-DECK OPNG LWR
- D TUBE-FUEL FILLER
- E DEFLECTOR-REAR STONE
- F PANEL-QTR OUTSIDE
- G LOCK-DECK LID



PLUGS AND GASKETS MUST BE FIRMLY SEATED TO PROVIDE A WATERTIGHT AND AIRTIGHT SEAL.

PLUG, GASKET & RUBBER PARTS

MODELS		FG/BJ-0-00	
DRAWN	CHECKED	APP	APP
MONKS	HEIER		
DATE		DATE	
2-13-69		2-13-69	
MANUAL NO.		2654901	
PRODUCT PLANNING & DEVELOPMENT STAFF		CHRYSLER CORPORATION	
ENGINEERING ILLUSTRATION		DEPT. 3440	
CR. NO. LET		DATE CRICKER	
01208-167		A C/OUT 1 WAS 1332735	
A "G" SER. MODS. ADDED		V860WHP	
DATE CRICKER		DATE CRICKER	