

1971 Dodge Car and Truck Color and Upholstery Selector



1971 Dodge Monaco

■ 4-DOOR SEDAN ■ 4-DOOR HARDTOP ■ 2-DOOR HARDTOP
■ 2- & 3-SEAT STATION WAGONS

TABLE OF CONTENTS

<i>Split-back Bench Seat with folding front center armrest</i>	
<i>Cloth & Vinyl—Standard Hardtops and Sedan</i>	2, 3
<i>Vinyl—Standard Wagons, opt. Hardtops</i>	4, 5
<i>50/50 Seats with dual front center armrests and recliner</i>	
<i>Cloth & Vinyl—Optional 4-door HT, Sedan and Wagons</i>	2, 3
<i>Vinyl—Optional Wagons</i>	4, 5
<i>Bucket Seats with center cushion and folding armrest.</i>	
<i>Vinyl—Optional 2-door Hardtop</i>	4, 5
<i>Monaco Two-Tone and Paint Stripe Information</i>	6

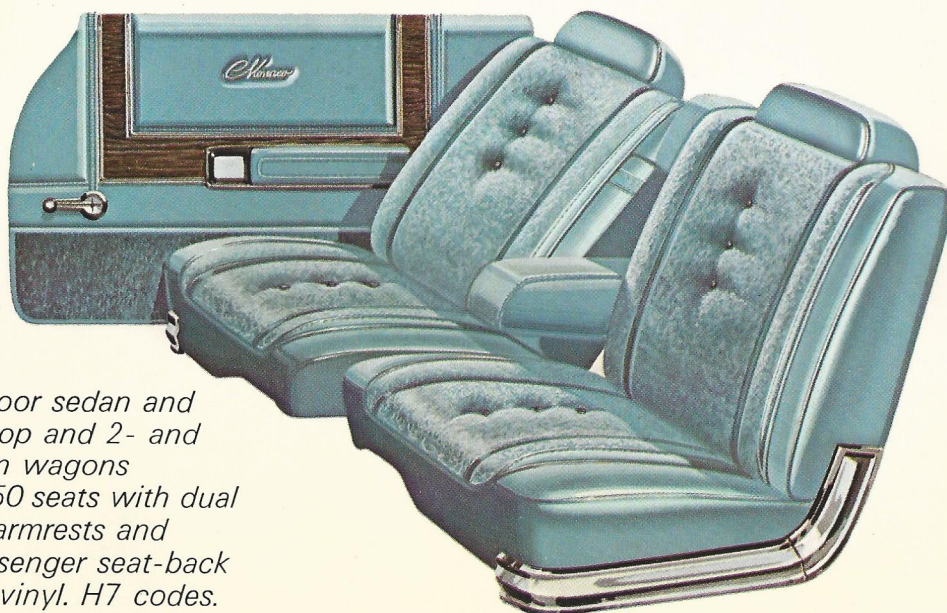
Monaco

■ 2-DOOR HARDTOP, 4-DOOR HARDTOP AND 4-DOOR SEDAN



- *Monaco 2-door hardtop, 4-door hardtop and 4-door sedan, standard cloth and vinyl bench with split back and folding front center armrest. H3 codes.*

■ 4-DOOR SEDAN AND 4-DOOR HARDTOP AND 2- AND 3-SEAT STATION WAGONS



- *Monaco 4-door sedan and 4-door hardtop and 2- and 3-seat station wagons optional 50/50 seats with dual front center armrests and reclining passenger seat-back in cloth and vinyl. H7 codes.*



Bench Seat Code H3B2
Exteriors: GA8, GB2, GB7,
EW1, TX9



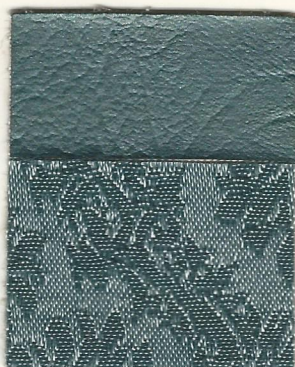
Bench Seat Code H3F7
Exteriors: GF3, GF7, GJ4,
EW1, TX9, GY4,
GY8



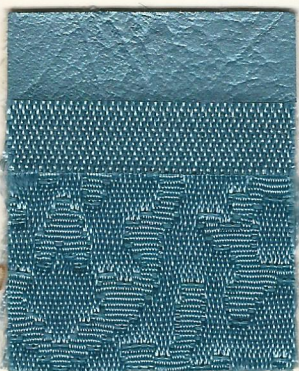
Bench Seat Code H3Y5
Exteriors: GF7, EW1, TX9,
GY4, GY8, GY9



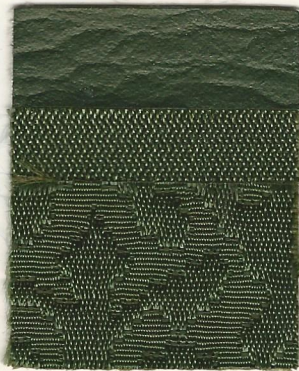
Bench Seat Code H3X9
Exteriors: All Monaco Colors



Bench Seat Code H3A6
Exteriors: GA4, GA8, EW1,
TX9



50/50 Seat Code H7B2
Exteriors: GA8, GB2, GB7,
EW1, TX9



50/50 Seat Code H7F7
Exteriors: GF3, GF7, GJ4,
EW1, TX9, GY4,
GY8



50/50 Seat Code H7X9
Exteriors: All Monaco Colors



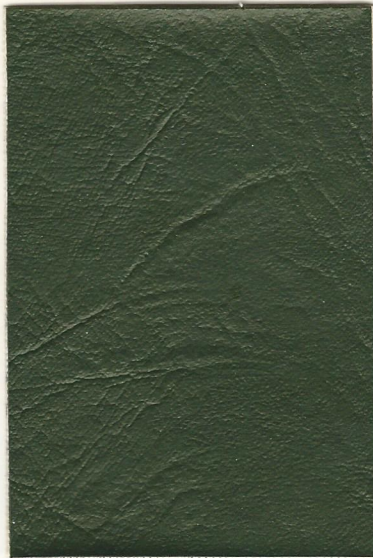
50/50 Seat Code H7A6
(N.A. Wagons)
Exteriors: GA4, GA8,
EW1, TX9

NOTE: Listed are recommended paint and trim combinations; however, any solid exterior paint color is available with any body model. Interior trim selection is restricted to the body styles indicated. Care should be taken when choosing non-recommended paint and trim combinations.



Bench Seat Code H4B2
(Wagons only)

Exteriors: GA8, GB2, GB7, EW1,
TX9



Bench Seat Code H4F7

Exteriors: GF3, GF7, GJ4, EW1,
TX9, GY4, GY8



Bench Seat Code H4X9
Bucket Seat Code H6X9
(2-dr. HT only)

50/50 Seat Code H8X9
(Wagons only)
Exteriors: All Monaco Colors



Bench Seat Code H4T7
(Wagons only)

50/50 Seat Code H8T7
(Wagons only)

Exteriors: FE5, GF3, GF7, GK6, GT8,
EW1, TX9, GY4, GY8



Bench Seat Code H4E8
(2-dr. & 4-dr. HT only)

Bucket Seat Code H6E8
(2-dr. HT only)

Exteriors: GE7, EW1, TX9



Bucket Seat Code H6XW
(2-dr. HT only)

Exteriors: All Monaco Colors

NOTE: Listed are recommended paint and trim combinations; however, any solid exterior paint color is available with any body model. Interior trim selection is restricted to the body styles indicated. Care should be taken when choosing non-recommended paint and trim combinations.

Monaco

- 2- AND 3-SEAT STATION WAGONS
AND 2- AND 4-DOOR HARDTOPS



- Monaco 2- and 3-seat station wagons standard bench seat with split back and folding front center armrest in all vinyl. H4 codes. The H4 codes are optional in the 2- and 4-door hardtops.

- Monaco 2-door hardtop optional all vinyl bucket seats with fixed center cushion and folding center armrest. H6 codes.



- Monaco 2- and 3-seat station wagons optional 50/50 seats with dual front center armrests and reclining passenger seat-back in all vinyl. H8 codes.

Two-Tone Combinations

(Extra Cost; N.A. Station Wagons)

If you select this interior trim . . .	One of the lower paint colors must be . . .	And the second upper paint color can be any one of these . . .
BLUE	Lt. Blue Met. GB2 Dark Blue Met. GB7	Dark Gunmetal Met. GA8 White EW1, Black TX9
GREEN	Med. Green Met. GF3 Dark Green Met. GF7	Moss Green Met. GJ4 White EW1, Black TX9 Gold GY4, Gold Met. GY8
GUNMETAL	Lt. Gunmetal Met. GA4 Dark Gunmetal Met. GA8	White EW1, Black TX9
GOLD	Gold GY4, Gold Met. GY8 Dark Gold Met. GY9	Dark Green Met. GF7 White EW1, Black TX9
RUSSET	Burgundy GE7	White EW1, Black TX9
BLACK	Black TX9	Any other Exterior Color
WHITE/BLACK	White EW1	Any other Exterior Color

Accent Stripes

(Standard Monaco Hardtops & Sedans; N.A. Station Wagons)

Interior Trim Color	Exterior Colors																	
	GA4	GA8	GB2	GB7	FE5	GE7	GF3	GF7	GJ4	GK6	FQ5	GT8	EW1	TX9	GY3	GY4	GY8	GY9
BLUE	—	W	B	B	—	—	—	—	—	—	—	—	B	B	—	—	—	—
GREEN	—	—	—	—	—	—	F	F	F	—	—	—	F	F	—	F	X	—
GUNMETAL	R	R	—	—	—	—	—	—	—	—	—	—	X	W	—	—	—	—
GOLD	—	—	—	—	—	—	—	F	—	—	—	—	Y	Y	—	Y	Y	Y
RUSSET	—	—	—	—	—	W	—	—	—	—	—	—	X	W	—	—	—	—
BLACK	R	R	B	B	X	R	X	F	X	X	W	W	X	W	X	Y	Y	W
WHITE/BLACK	W	W	B	W	W	W	W	W	W	W	W	W	X	W	X	Y	Y	W

Paint Stripe Colors:

X—Black
W—White

Code:

V7X
V7W

R—Red

B—Blue
F—Green
Y—Gold

V7R

V7B
V7F
V7Y

1971 Dodge Polara

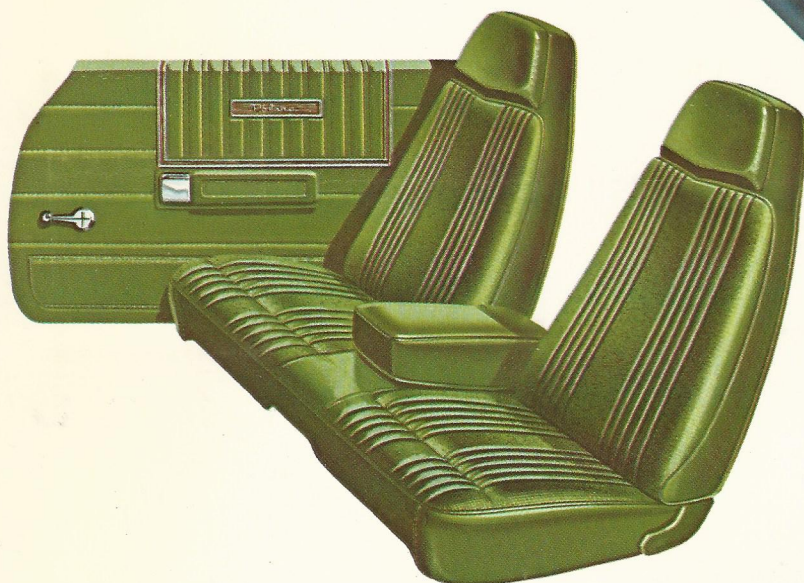
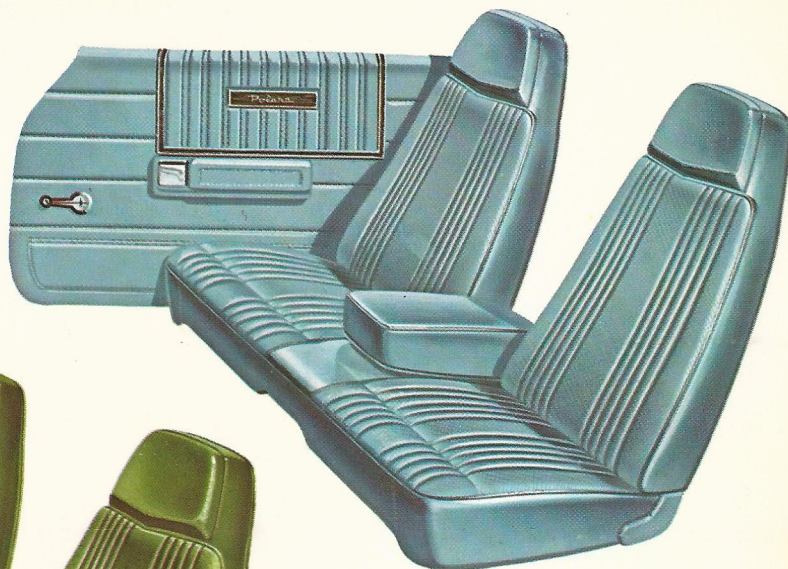
■ 4-DOOR SEDAN ■ 4-DOOR HARDTOP ■ 2-DOOR HARDTOP
■ 2- & 3-SEAT STATION WAGONS

TABLE OF CONTENTS

<i>Split-back Bench Seat with folding front center armrest</i>	
<i>Cloth & Vinyl—Standard on Polara Brougham</i>	
<i>2-dr. & 4-dr. HT.....</i>	8, 9
<i>Vinyl—Opt. on Polara Brougham 2-dr. & 4-dr. HT.....</i>	8, 9
<i>Bucket Seat with center cushion and folding armrest.</i>	
<i>Vinyl—Opt. on Polara Brougham 2-dr. HT.....</i>	8, 9
<i>Bench Seat</i>	
<i>Cloth & Vinyl—Std. Polara Custom HT's and Sedan . .</i>	10, 11
<i>Vinyl—Std. Polara Custom Wagons, opt. HT's and Sedan .</i>	10, 11
<i>Bench Seat</i>	
<i>Cloth & Vinyl—Std. Polara 2-dr. HT</i>	
<i>and 4-dr. Sedan</i>	12, 13
<i>Vinyl—Opt. 2-dr. HT and 4-dr. Sedan</i>	12, 13
<i>Polara Two-Tone Information</i>	14

Polara Brougham

■ 2-DOOR HARDTOP, 4-DOOR HARDTOP



■ *Polara Brougham 2-door hardtop and 4-door hardtop standard cloth and vinyl bench with split back and folding front center armrest. M3 codes.*

■ *Polara Brougham 2-door hardtop and 4-door hardtop optional all vinyl bench with split back and folding front center armrest. M4 codes.*



■ *Polara Brougham 2-door hardtop optional all vinyl bucket seats with fixed center cushion and folding front center armrest. M6 codes.*



Bench Seat Code M3B2
Exteriors: GA8, GB2, GB7,
EW1, TX9



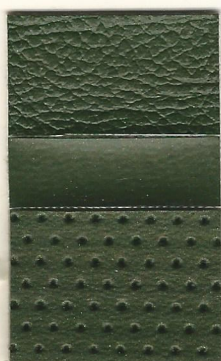
Bench Seat Code M3F7
Exteriors: GF3, GF7, GJ4,
EW1, TX9, GY4,
GY8



Bench Seat Code M3X9
Exteriors: All Polara Colors



Bench Seat Code M3Y5
Exteriors: GF7, EW1, TX9,
GY4, GY8, GY9



Bench Seat Code M4F7
Exteriors: GF3, GF7,
GJ4, EW1,
TX9, GY4,
GY8



Bench Seat Code M4B2
Exteriors: GA8, GB2,
GB7, EW1, TX9



Bench Seat Code M4E8
Exteriors: GE7, EW1,
TX9



Bench Seat Code M4XW
Exteriors: All Polara
Colors



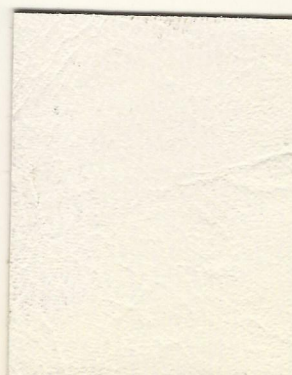
Bench Seat Code M4X9
Exteriors: All Polara
Colors



Bucket Seat Code M6E8
Exteriors: GE7, EW1, TX9

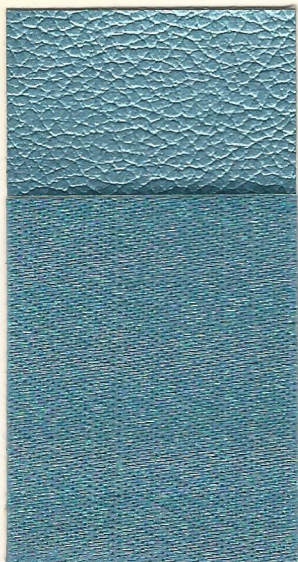


Bucket Seat Code M6X9
Exteriors: All Polara Colors



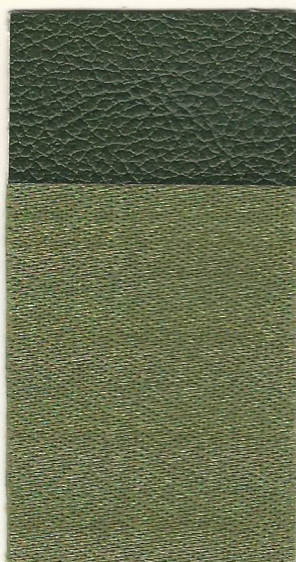
Bucket Seat Code M6XW
Exteriors: All Polara Colors

NOTE: Listed are recommended paint and trim combinations; however, any solid exterior paint color is available with any body model. Interior trim selection is restricted to the body styles indicated. Care should be taken when choosing non-recommended paint and trim combinations.



Bench Seat Code L1B2

Exteriors: GA8, GB2, GB7,
EW1, TX9



Bench Seat Code L1F7

Exteriors: GF3, GF7, GJ4,
EW1, TX9, GY4,
GY8



Bench Seat Code L1Y5

Exteriors: GF7, EW1, TX9,
GY4, GY8, GY9



Bench Seat Code L1X9

Exteriors: All Polara Colors



Bench Seat Code L2F7

Exteriors: GF3, GF7, GJ4,
EW1, TX9, GY4,
GY8



Bench Seat Code L2B2

Exteriors: GA8, GB2, GB7,
EW1, TX9



Bench Seat Code L2T7

Exteriors: FE5, GF3, GF7,
GK6, GT8, EW1,
TX9, GY4, GY8



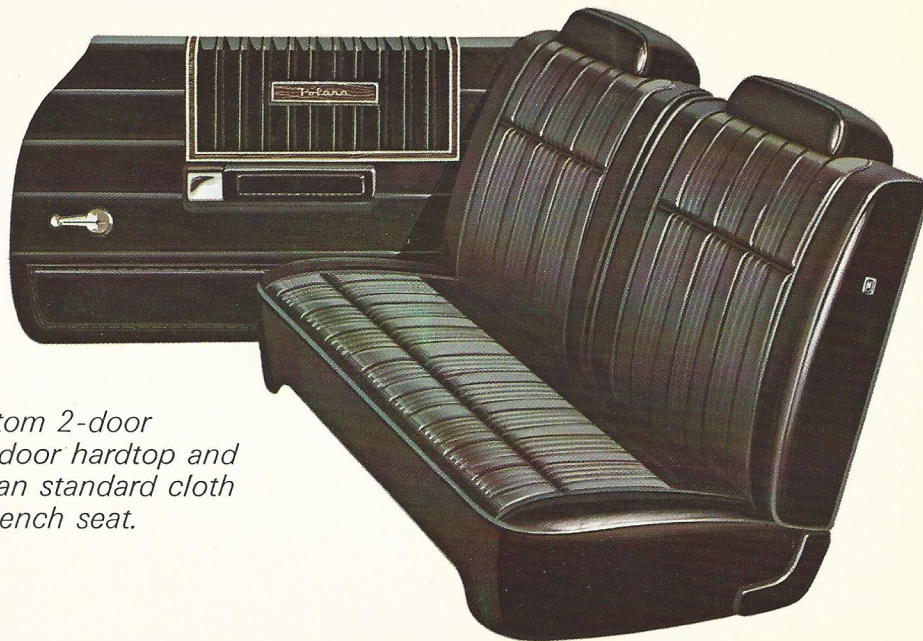
Bench Seat Code L2X9

Exteriors: All Polara Colors

NOTE: Listed are recommended paint and trim combinations; however, any solid exterior paint color is available with any body model. Interior trim selection is restricted to the body styles indicated. Care should be taken when choosing non-recommended paint and trim combinations.

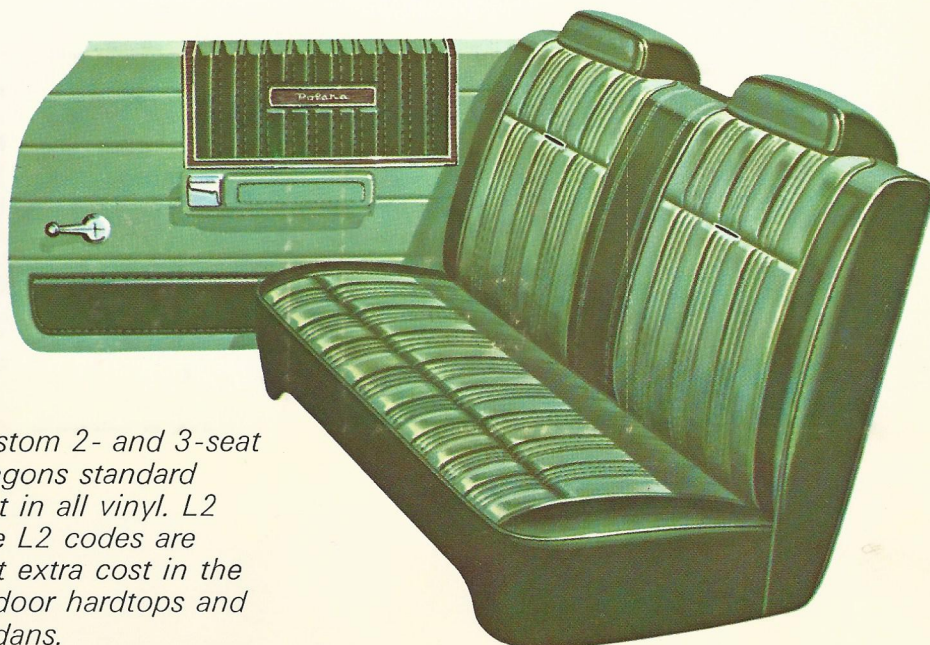
Polara Custom

- 2-DOOR HARDTOP
4-DOOR HARDTOP AND 4-DOOR SEDAN



- *Polara Custom 2-door hardtop, 4-door hardtop and 4-door sedan standard cloth and vinyl bench seat. L1 codes.*

- 2- AND 3-SEAT STATION WAGONS



- *Polara Custom 2- and 3-seat station wagons standard bench seat in all vinyl. L2 codes. The L2 codes are optional at extra cost in the 2- and 4-door hardtops and 4-door sedans.*

Polara

■ 2-DOOR HARDTOP AND 4-DOOR SEDAN



- *Polara 2-door hardtop and 4-door sedan standard cloth and vinyl bench seat. F1 codes.*

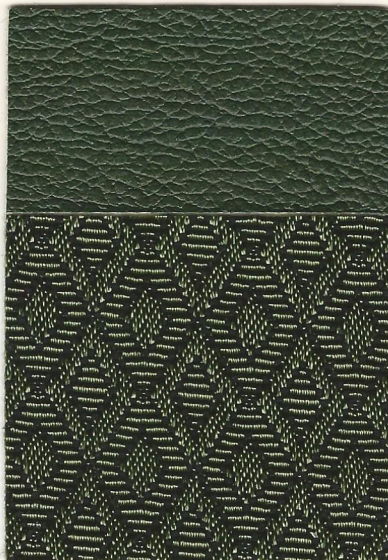


- *Polara 2-door hardtop and 4-door sedan optional at extra cost all vinyl bench seat. F2 codes.*



Bench Seat Code F1B2

Exteriors: GA8, GB2, GB7, EW1, TX9



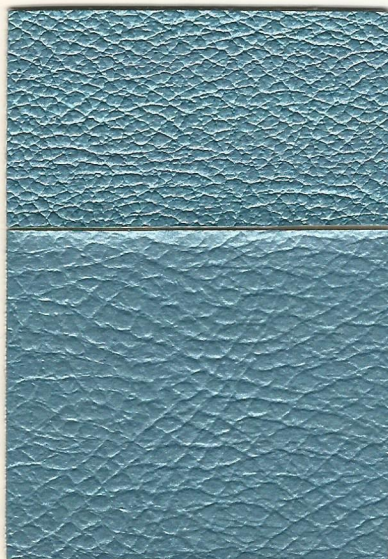
Bench Seat Code F1F7

Exteriors: GF3, GF7, GJ4, EW1, TX9, GY4, GY8



Bench Seat Code F1T7

Exteriors: FE5, GF3, GF7, GK6, GT8, EW1, TX9, GY4, GY8



Bench Seat Code F2B2

Exteriors: GA8, GB2, GB7, EW1, TX9



Bench Seat Code F2XA

Exteriors: All Polara Colors

NOTE: Listed are recommended paint and trim combinations; however, any solid exterior paint color is available with any body model. Interior trim selection is restricted to the body styles indicated. Care should be taken when choosing non-recommended paint and trim combinations.

Two-Tone Combinations

(Extra Cost; N.A. Station Wagons)

If you select this interior trim . . .	One of the lower paint colors must be . . .	And the second upper paint color can be any one of these . . .
BLUE	Lt. Blue Met. GB2 Dark Blue Met. GB7	Dark Gunmetal Met. GA8 White EW1, Black TX9
GREEN	Med. Green Met. GF3 Dark Green Met. GF7	Moss Green Met. GJ4 White EW1, Black TX9, Cream DY3 Gold GY4, Gold Met. GY8
TAN	Dark Tan Met. GT8	Bright Red FE5, Med. Green Met. GF3 Dark Green Met. GF7, Dark Bronze Met. GK6 White EW1, Black TX9, Gold GY4, Gold Met. GY8
RUSSET	Burgundy GE7	White EW1, Black TX9
GOLD	Gold GY4, Gold Met. GY8 Dark Gold Met. GY9	Dark Green Met. GF7 White EW1, Black TX9
WHITE/BLACK	White EW1	Any other Exterior Color
BLACK	Black TX9	Any other Exterior Color
CHARCOAL	Black TX9	Any other Exterior Color

1971 Dodge Charger

- CHARGER R/T 2-DOOR HARDTOP
- CHARGER SPECIAL EDITION 2-DOOR HARDTOP
- CHARGER 500 2-DOOR HARDTOP
- CHARGER SUPER BEE 2-DOOR HARDTOP
- CHARGER 2-DOOR HARDTOP
- CHARGER 2-DOOR COUPE

TABLE OF CONTENTS

Bucket Seats

<i>Vinyl—Std. R/T, 500, opt. Super Bee</i>	16, 17
<i>Cloth & Vinyl—Opt. R/T, 500 & Super Bee</i>	16, 17
<i>Cloth & Vinyl—Opt. S.E. only</i>	18, 19
<i>Leather—Opt. S.E. only</i>	18, 19

Split-back Bench Seat with folding front center armrest

<i>Cloth & Vinyl—Opt. 500</i>	16, 17
<i>Cloth & Vinyl—Std. S.E. only</i>	18, 19

Bench Seat

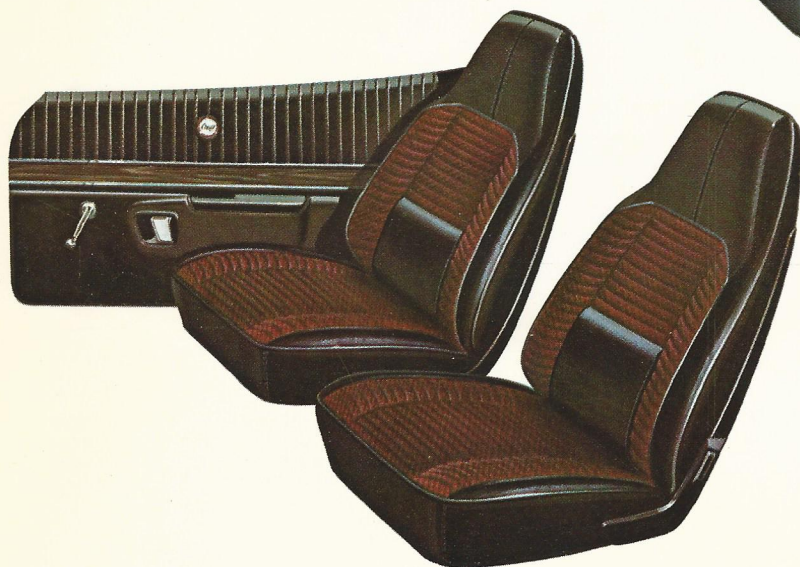
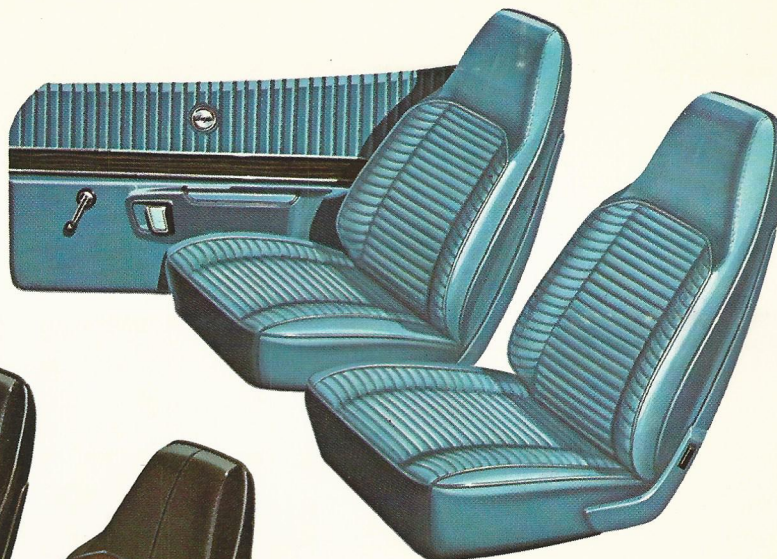
<i>Vinyl—Std. on Charger, Super Bee & Charger 2-dr. Coupe</i>	20, 21
---	---------------

<i>Paint Stripe Information</i>	22
---	-----------

Charger R/T, 500 and Super Bee

■ 2-DOOR HARDTOP

- *Charger R/T and 500 2-door hardtop standard all vinyl bucket seat. D6 codes.*
- *Charger Super Bee 2-door hardtop, optional all vinyl bucket seat. C6 codes.*



- *Charger R/T and 500 2-door hardtop optional cloth and vinyl bucket seats. D5 codes.*
- *Charger Super Bee 2-door hardtop optional cloth and vinyl bucket seats. C5 codes.*



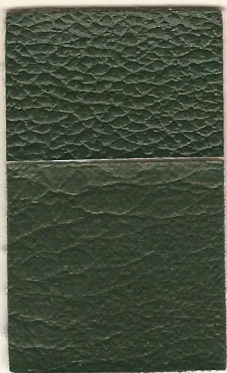
- *Charger 500 2-door hardtop optional cloth and vinyl bench with folding center armrest. C3 codes.*



R/T & 500 bucket seat. Code D6B5

Super Bee bucket seat. Code C6B5

Exteriors: GB2, GB5, GB7, GW3, TX9



R/T & 500 bucket seat. Code D6F7

Super Bee bucket seat. Code C6F7

Exteriors: GF3, GF7, GT2, GW3, TX9, GY8



R/T & 500 bucket seat. Code D6T7

Super Bee bucket seat. Code C6T7

Exteriors: FE5, GF3, GF7, GK6, EL5, GT2, EV2, GW3, TX9, GY8



R/T & 500 bucket seat. Code D6X9

Super Bee bucket seat. Code C6X9

Exteriors: All Charger Colors



R/T & 500 bucket seat. Code D6XA

Super Bee bucket seat. Code C6XA

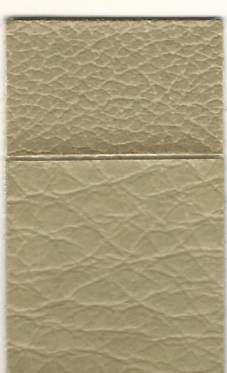
Exteriors: GA4, GW3, TX9



R/T & 500 bucket seat. Code D6XW

Super Bee bucket seat. Code C6XW

Exteriors: All Charger Colors



R/T & 500 bucket seat. Code D6Y3

Super Bee bucket seat. Code C6Y3

Exteriors: GF7, GW3, TX9, GY8, GY9



R/T & 500 bucket seat. Code D5F7

Super Bee bucket seat. Code C5F7

Exteriors: GF3, GF7, GT2, GW3, TX9, GY8



R/T & 500 bucket seat. Code D5X9

Super Bee bucket seat. Code C5X9

Exteriors: All Charger Colors.



R/T & 500 bucket seat. Code D5XV

Super Bee bucket seat. Code C5XV

Exteriors: EV2, GW3, TX9



Bench Seat Code C3B5

Exteriors: GB2, GB5, GB7, GW3, TX9



Bench Seat Code C3F7

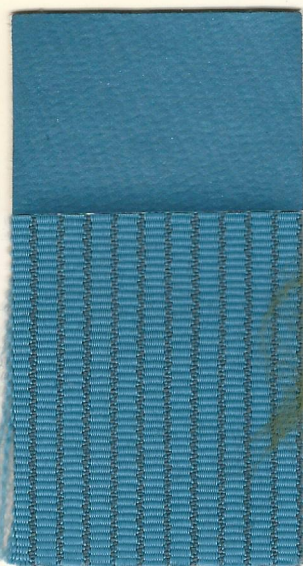
Exteriors: GF3, GF7, GT2, GW3, TX9, GY8



Bench Seat Code C3X9

Exteriors: All Charger Colors.

NOTE: Listed are recommended paint and trim combinations; however, any solid exterior paint color is available with any body model. Interior trim selection is restricted to the body styles indicated. Care should be taken when choosing non-recommended paint and trim combinations.



Bench Seat Code D3B5
Bucket Seat Code E5B5
 Exteriors: GB2, GB5, GB7,
 GW3, TX9



Bench Seat Code D3F7
Bucket Seat Code E5F7
 Exteriors: GF3, GF7, GT2,
 GW3, TX9, GY8



Bench Seat Code D3X9
Bucket Seat Code E5X9
 Exteriors: All Charger Colors



Bench Seat Code D3Y3
Bucket Seat Code E5Y3
 Exteriors: GF7, GW3, TX9,
 GY8, GY9



Bucket Seat Code CRT7
 Exteriors: FE5, GF3, GF7,
 GK6, EL5, GT2, EV2,
 GW3, TX9, GY8



Bucket Seat Code CRX9
 Exteriors: All Charger Colors



Bucket Seat Code CRXA
 Exteriors: GA4, GW3, TX9

NOTE: Listed are recommended paint and trim combinations; however, any solid exterior paint color is available with any body model. Interior trim selection is restricted to the body styles indicated. Care should be taken when choosing non-recommended paint and trim combinations.

Charger "Special Edition"

■ 2-DOOR HARDTOP



- *Charger "Special Edition" 2-door hardtop standard cloth and vinyl bench with folding center armrest. D3 codes.*



- *Charger "Special Edition" 2-door hardtop optional leather and vinyl bucket seats. CR codes.*



- *Charger "Special Edition" 2-door hardtop optional cloth and vinyl bucket seat. E5 codes.*

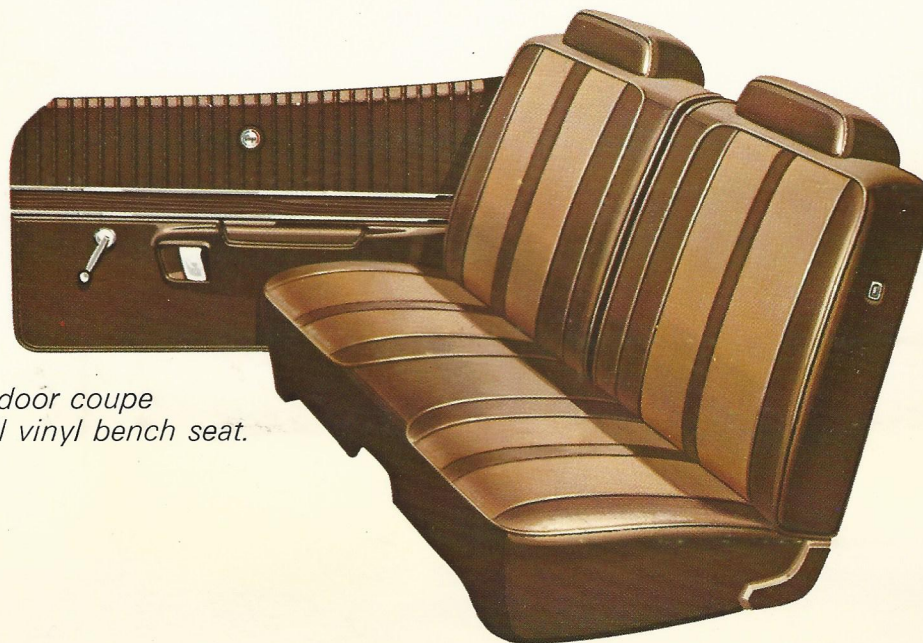
Charger Super Bee and Charger

■ 2-DOOR HARDTOP

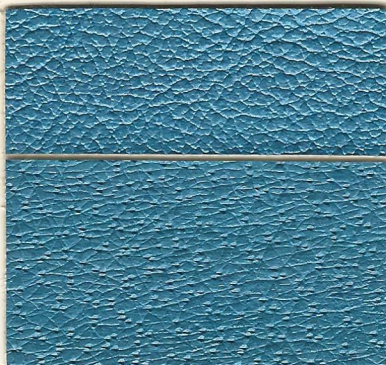


- *Charger Super Bee and Charger 2-door hardtop standard all vinyl bench seat. C2 codes.*

■ 2-DOOR COUPE



- *Charger 2-door coupe standard all vinyl bench seat. E2 codes.*



Bench Seat Code C2B5

Exteriors: GB2, GB5, GB7, GW3, TX9



Bench Seat Code C2F7

Exteriors: GF3, GF7, GT2, GW3, TX9, GY8



Bench Seat Code C2T7

Exteriors: FE5, GF3, GF7, GK6, EL5, GT2, EV2, GW3, TX9, GY8



Bench Seat Code C2X9

Exteriors: All Charger Colors



Bench Seat Code C2XW

Exteriors: All Charger Colors



Bench Seat Code C2Y3

Exteriors: GF7, GW3, TX9, GY8, GY9



Bench Seat Code E2B5

Exteriors: GB2, GB5, GB7, GW3, TX9



Bench Seat Code E2T7

Exteriors: FE5, GF3, GF7, GK6, EL5, GT2, EV2, GW3, TX9, GY8



Bench Seat Code E2X9

Exteriors: All Charger Colors

NOTE: Listed are recommended paint and trim combinations; however, any solid exterior paint color is available with any body model. Interior trim selection is restricted to the body styles indicated. Care should be taken when choosing non-recommended paint and trim combinations.

Accent Stripes

(Standard Charger 500)

Interior Trim Color	Exterior Colors																	
	GA4	GB2	GB5	GB7	FC7	FE5	GF3	GF7	FJ6	GK6	EL5	GT2	EV2	GW3	TX9	GY3	GY8	GY9
BLUE	—	B	W	W	—	—	—	—	—	—	—	—	—	B	W	—	—	—
GREEN	—	—	—	—	—	—	F	W	—	—	—	X	—	F	W	—	X	—
TAN	—	—	—	—	—	X	F	W	—	X	X	X	X	X	W	—	X	—
BLACK	X	B	W	W	X	X	F	W	X	X	X	X	X	X	W	X	X	W
GUNMETAL/BLK.	X	—	—	—	—	—	—	—	—	—	—	—	—	X	W	—	—	—
WHITE/BLK.	X	B	W	W	W	W	F	W	W	W	W	X	W	X	W	X	W	W
GOLD	—	—	—	—	—	—	—	W	—	—	—	—	—	Y	Y	—	X	W
ORANGE/BLK.	—	—	—	—	—	—	—	—	—	—	—	—	X	X	W	—	—	—

Stripe Colors:
X—Black
W—White

Code:
V7X
V7W

B—Blue
F—Green
Y—Gold

V7B
V7F
V7Y

Canopy Roof Accent Stripes

(Charger S.E.)

Interior Trim Color	Exterior Colors																	
	GA4	GB2	GB5	GB7	FC7	FE5	GF3	GF7	FJ6	GK6	EL5	GT2	EV2	GW3	TX9	GY3	GY8	GY9
BLUE	—	X	B	B	—	—	—	—	—	—	—	—	—	B	B	—	—	—
GREEN	—	—	—	—	—	—	F	F	—	—	—	X	—	F	F	—	Y	—
GOLD	—	—	—	—	—	—	—	F	—	—	—	—	—	Y	Y	—	Y	Y
BLACK	X	X	B	B	X	X	F	F	F	X	X	X	X	X	W	X	Y	Y
TAN	—	—	—	—	—	X	F	F	—	X	X	X	X	X	W	—	Y	—
GUNMETAL/BLACK	X	—	—	—	—	—	—	—	—	—	—	—	—	X	X	—	—	—

Stripe Colors:
X—Black
W—White

Code:
V8X
V8W

B—Blue
F—Green
Y—Gold

V8B
V8F
V8Y

CHARGER R/T & CHARGER SUPER BEE ACCENT STRIPES

FLAT BLACK ONLY CODE V6X
(AVAILABLE ALL EXTERIOR COLORS)

1971 Dodge Coronet

- CORONET BROUGHAM 4-DOOR SEDAN
- CORONET CRESTWOOD 2- & 3-SEAT STATION WAGON
- CORONET CUSTOM 4-DOOR SEDAN, AND 2- & 3-SEAT STATION WAGON
- CORONET 4-DOOR SEDAN, AND 2-SEAT STATION WAGON

TABLE OF CONTENTS

Split-back Bench Seat with folding front center armrest

Cloth & Vinyl—Standard Brougham 4-door Sedan . . . 24, 25

Vinyl—Standard Coronet Crestwood Wagons 24, 25

Bench Seat

Cloth & Vinyl—Standard Custom 4-door Sedan 26, 27

Vinyl—Standard Custom Wagons, opt. Custom Sedan . 26, 27

Vinyl—Standard Coronet Sedan & Wagon 26, 27

Coronet Two-tone and Paint Stripe Information 28

Coronet Brougham, Crestwood

■ 4-DOOR SEDAN



- *Coronet Brougham 4-door sedan standard cloth and vinyl split back with folding center armrest. P3 codes. Optional on Coronet Crestwood Station Wagons. P3 codes.*

■ CRESTWOOD 2- & 3-SEAT STATION WAGONS



- *Coronet Crestwood 2- and 3-seat station wagons standard all vinyl split-back bench with folding center armrest. P4 codes.*



Bench Seat Code P3B7
Exteriors: GB2, GB5, GB7,
GW3, TX9



Bench Seat Code P3F7
Exteriors: GF3, GF7, GT2,
GW3, TX9, GY8



Bench Seat Code P3T7
(Station Wagons Only)
Exteriors: FE5, GF3, GF7,
GK6, EL5, GT2, EV2,
GW3, TX9, GY8



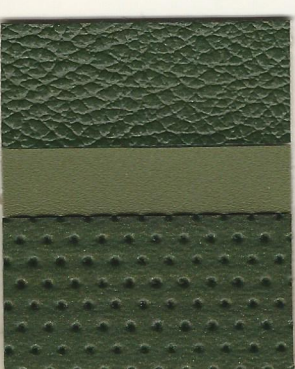
Bench Seat Code P3Y3
(Sedans Only)
Exteriors: GF7, GW3, TX9,
GY8, GY9



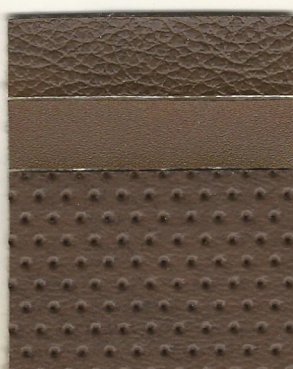
Bench Seat Code P3X9
(Sedans Only)
Exteriors: All Coronet Colors



Bench Seat Code P4B7
Exteriors: GB2, GB5, GB7,
GW3, TX9



Bench Seat Code P4F7
Exteriors: GF3, GF7, GT2,
GW3, TX9, GY8

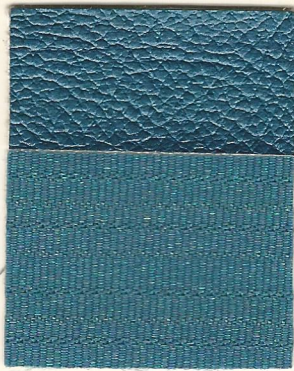


Bench Seat Code P4T7
Exteriors: FE5, GF3, GF7,
GK6, EL5, GT2, EV2,
GW3, TX9, GY8

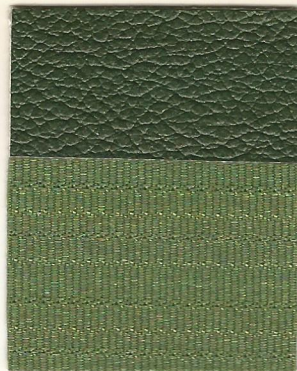


Bench Seat Code P4X9
Exteriors: All Coronet Colors

NOTE: Listed are recommended paint and trim combinations; however, any solid exterior paint color is available with any body model. Interior trim selection is restricted to the body styles indicated. Care should be taken when choosing non-recommended paint and trim combinations.



Bench Seat Code H1B7
Exteriors: GB2, GB5, GB7,
GW3, TX9



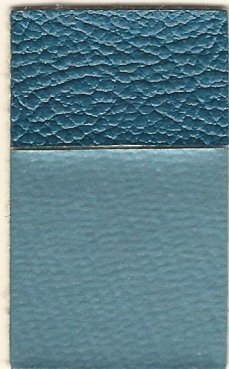
Bench Seat Code H1F7
Exteriors: GF3, GF7, GT2,
GW3, TX9, GY8



Bench Seat Code H1Y3
Exteriors: GF7, GW3, TX9,
GY8, GY9



Bench Seat Code H1X9
Exteriors: All Coronet Colors



Bench Seat Code H2B7
Exteriors: GB2, GB5,
GB7, GW3,
TX9



Bench Seat Code H2F7
Exteriors: GF3, GF7,
GT2, GW3,
TX9, GY8



Bench Seat Code H2T7
Exteriors: FE5, GF3,
GF7, GK6,
EL5, GT2,
EV2, GW3,
TX9, GY8



Bench Seat Code H2X9
Exteriors: All Coronet Colors



Bench Seat Code H2Y3
(Sedans Only)
Exteriors: GF7, GW3,
TX9, GY8,
GY9



Bench Seat Code L2B7
Exteriors: GB2, GB5, GB7,
GW3, TX9



Bench Seat Code L2T7
Exteriors: FE5, GF3, GF7,
GK6, EL5, GT2, EV2,
GW3, TX9, GY8

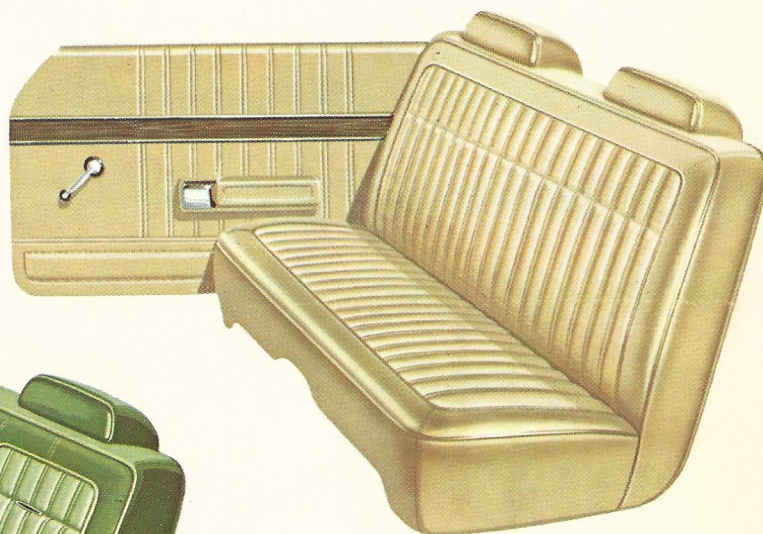


Bench Seat Code L2X9
Exteriors: All Coronet Colors

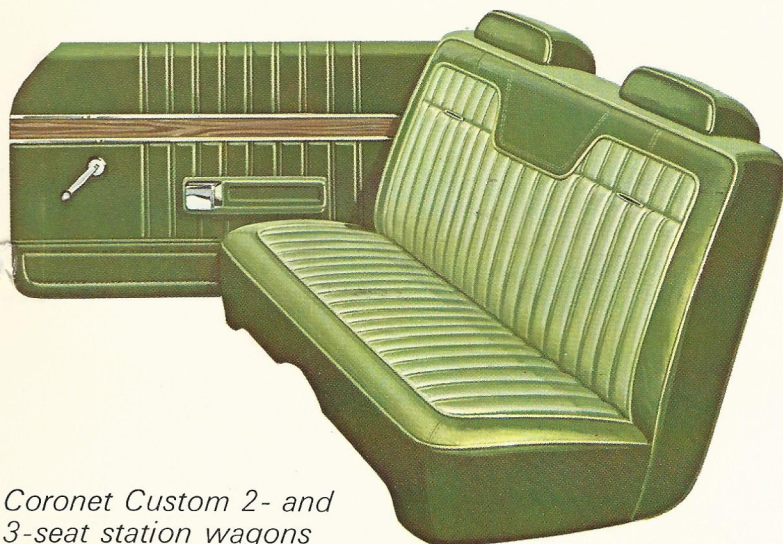
NOTE: Listed are recommended paint and trim combinations; however, any solid exterior paint color is available with any body model. Interior trim selection is restricted to the body styles indicated. Care should be taken when choosing non-recommended paint and trim combinations.

Coronet Custom, Coronet

■ 2- & 3-SEAT STATION WAGONS 4-DOOR SEDANS

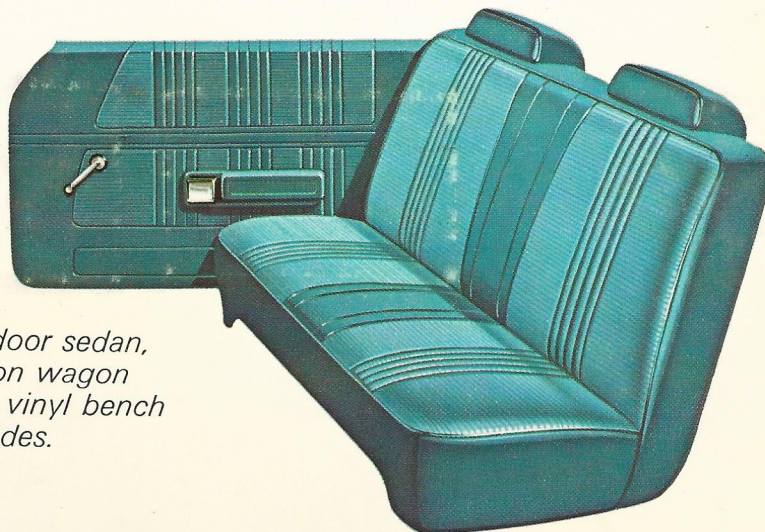


- *Coronet Custom 4-door sedan standard cloth and vinyl bench seat. H1 codes. Optional all vinyl bench seat. H2 codes.*



- *Coronet Custom 2- and 3-seat station wagons standard all vinyl bench seat. H2 codes. Optional on the Custom 4-door sedans. H2 codes.*

■ 4-DOOR SEDAN, 2-SEAT WAGONS



- *Coronet 4-door sedan, 2-seat station wagon standard all vinyl bench seats. L2 codes.*

Two-Tone Combinations

(N.A. Coronet Station Wagons)

If you select this interior trim . . .	One of the lower paint colors must be . . .	And the second upper paint color can be any one of these . . .
BLUE	Dark Blue Met. GB7	Lt. Blue Met. GB2, Bright Blue Met. GB5, Bright White GW3, Black TX9
GREEN	Dark Green Met. GF7	Med. Green Met. GF3, Tan Met. GT2, Bright White GW3, Black TX9, Gold Met. GY8
BLACK	Black TX9	Any other exterior color

Accent Stripes

(Standard Coronet Brougham)

Interior Trim Color	Exterior Colors																	
	GA4	GB2	GB5	GB7	FC7	FE5	GF3	GF7	FJ6	GK6	EL5	GT2	EV2	GW3	TX9	GY3	GY8	GY9
BLUE	—	B	W	W	—	—	—	—	—	—	—	—	—	B	W	—	—	—
GREEN	—	—	—	—	—	—	F	W	—	—	—	X	—	F	W	—	X	—
BLACK	X	B	W	W	X	X	F	W	X	X	X	X	X	X	W	X	X	W
GOLD	—	—	—	—	—	—	—	W	—	—	—	—	—	Y	Y		X	W

Stripe Colors:
X—Black
W—White

Code:
V7X
V7W

B—Blue
F—Green
Y—Gold

V7B
V7F
V7Y

1971 Dodge Challenger

■ 2-DOOR COUPE ■ 2-DOOR HARDTOP ■ CONVERTIBLE

TABLE OF CONTENTS

Bucket Seats

*Vinyl—Standard R/T and Challenger 2-door
HT's and Challenger Convertible* **30, 31**

Vinyl—Standard Challenger 2-door Coupe only **34, 35**
Cloth & Vinyl—Opt. R/T and Challenger 2-door HT's . **32, 33**

*Leather & Vinyl—Opt. R/T and Challenger 2-door
HT's and Challenger Convertible* **32, 33**

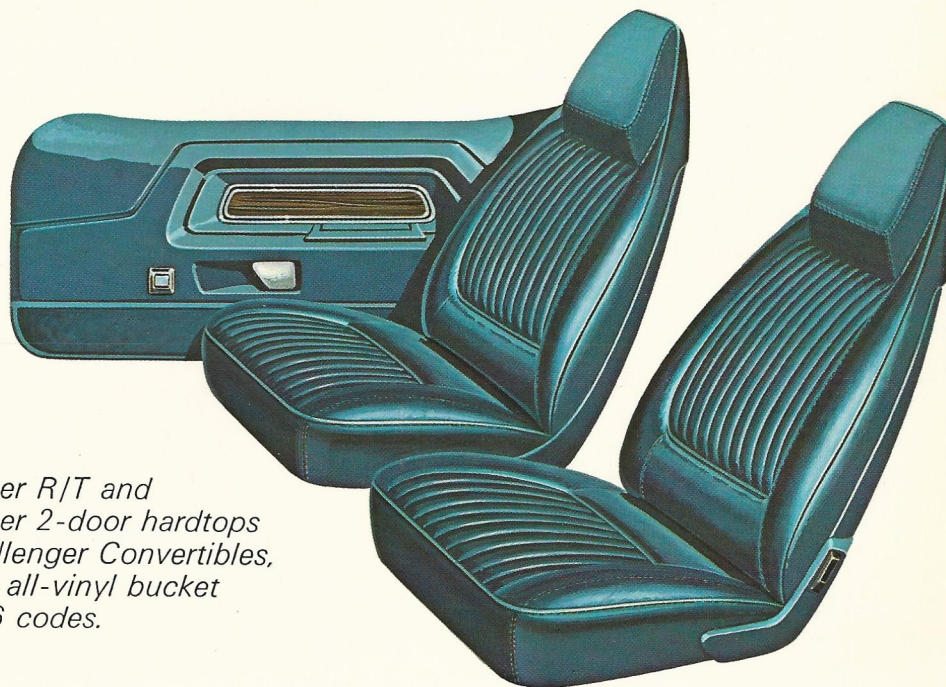
Bench Seat with center armrest

Vinyl—Opt. Challenger 2-door HT only **30, 31**

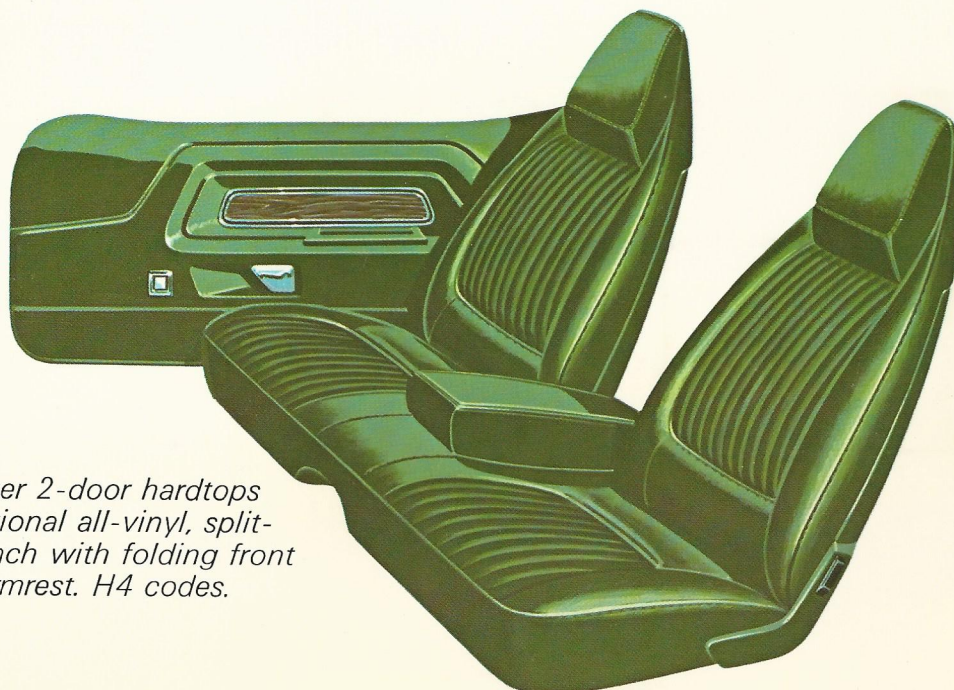
Challenger Paint Stripe Information **36**

Challenger R/T and Challenger

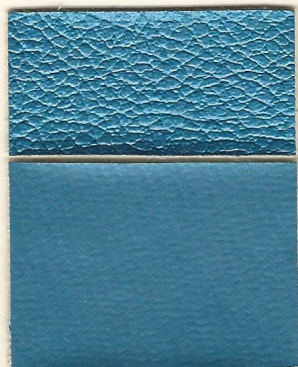
■ 2-DOOR HARDTOP, CONVERTIBLE



- *Challenger R/T and Challenger 2-door hardtops and Challenger Convertibles, standard all-vinyl bucket seats. H6 codes.*



- *Challenger 2-door hardtops only, optional all-vinyl, split-back bench with folding front center armrest. H4 codes.*



Bucket Seat Code H6B5
Exteriors: GB2, GB5, GB7,
GW3, TX9



Bucket Seat Code H6F7
Exteriors: GF3, GF7, GT2,
GW3, TX9, GY8



Bucket Seat Code H6Y3
Exteriors: GF7, GW3, TX9,
GY8, GY9



Bucket Seat Code H6T7
Exteriors: FE5, GF3, GF7,
GK6, EL5, GT2, EV2,
GW3, TX9, GY8



Bucket Seat Code H6X9
Exteriors: All Challenger
Colors



Bucket Seat Code H6XW
Exteriors: All Challenger
Colors



Bench Seat Code H4F7
Exteriors: GF3, GF7, GT2,
GW3, TX9, GY8



Bench Seat Code H4X9
Exteriors: All Challenger
Colors

NOTE: Listed are recommended paint and trim combinations; however, any solid exterior paint color is available with any body model. Interior trim selection is restricted to the body styles indicated. Care should be taken when choosing non-recommended paint and trim combinations.



Bucket Seat Code HRX9
Exteriors: All Challenger Colors



Bucket Seat Code H5F7
Exteriors: GF3, GF7, GT2, GW3,
TX9, GY8



Bucket Seat Code H5X9
Exteriors: FE5, EV2, GW3, TX9



Bucket Seat Code H5XX
Exteriors: All Challenger Colors

NOTE: Listed are recommended paint and trim combinations; however, any solid exterior paint color is available with any body model. Interior trim selection is restricted to the body styles indicated. Care should be taken when choosing non-recommended paint and trim combinations.

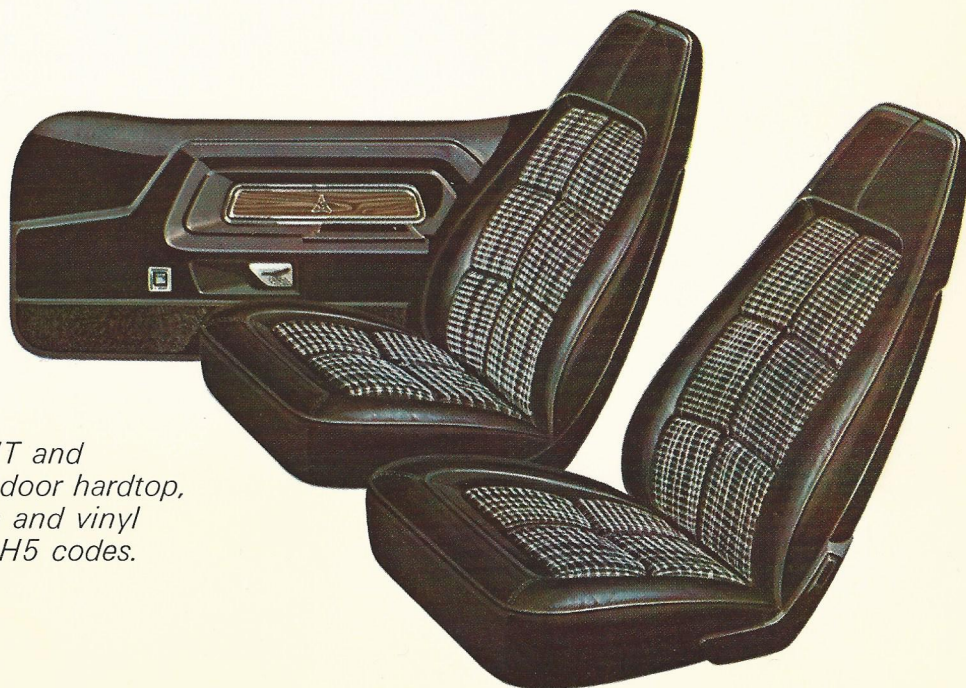
Challenger R/T and Challenger

■ 2-DOOR HARDTOP, CONVERTIBLE

- *Challenger R/T and Challenger 2-door hardtops and Challenger Convertible, optional leather and vinyl bucket seats. HR code.*



- *Challenger R/T and Challenger 2-door hardtop, optional cloth and vinyl bucket seats. H5 codes.*



Challenger

■ 2-DOOR COUPE



■ *Challenger 2-door coupe, standard all vinyl bucket seats. L6 codes.*



Bucket Seat Code L6B5

Exteriors: GB2, GB5, GB7, GW3, TX9



Bucket Seat Code L6F7

Exteriors: GF3, GF7, GT2, GW3, TX9, GY8



Bucket Seat Code L6T7

Exteriors: FE5, GF3, GF7, GK6, EL5, GT2, EV2, GW3, TX9, GY8



Bucket Seat Code L6X9

Exteriors: All Challenger Colors



Bucket Seat Code L6XW

Exteriors: All Challenger Colors

NOTE: Listed are recommended paint and trim combinations; however, any solid exterior paint color is available with any body model. Interior trim selection is restricted to the body styles indicated. Care should be taken when choosing non-recommended paint and trim combinations.

Accent Stripes

(Standard Challenger)

Interior Color Trim	Exterior Colors																	
	GA4	GB2	GB5	GB7	FC7	FE5	GF3	GF7	FJ6	GK6	EL5	GT2	EV2	GW3	TX9	GY3	GY8	GY9
BLUE	—	X	W	W	—	—	—	—	—	—	—	—	—	B	B	—	—	—
GREEN	—	—	—	—	—	—	F	F	—	—	—	X	—	F	F	—	Y	—
TAN	—	—	—	—	—	X	F	F	—	W	X	X	X	X	W	—	Y	—
BLACK	X	X	B	B	W	X	F	F	F	W	X	X	X	X	W	X	Y	Y
WHITE/BLACK	X	X	B	B	W	X	F	F	F	W	X	X	X	X	W	X	Y	Y
GOLD	—	—	—	—	—	—	—	F	—	—	—	—	—	Y	Y	—	Y	Y
ORANGE/BLACK	—	—	—	—	—	X	—	—	—	—	—	—	X	X	W	—	—	—

Stripe Colors:

X—Black

W—White

Code:

V7X

V7W

B—Blue

F—Green

Y—Gold

V7B

V7F

V7Y

Tape Stripes

(Challenger R/T & Challenger)

Interior Trim Color	Exterior Colors																	
	GA4	GB2	GB5	GB7	FC7	FE5	GF3	GF7	FJ6	GK6	EL5	GT2	EV2	GW3	TX9	GY3	GY8	GY9
BLUE	—	X	W	W	—	—	—	—	—	—	—	—	—	X	W	—	—	—
GREEN	—	—	—	—	—	—	X	W	—	—	—	X	—	X	J	—	W	—
TAN	—	—	—	—	—	W	X	W	—	W	X	X	X	X	W	—	W	—
BLACK	X	X	X	X	X	X	X	X	J	X	X	X	V	X	J	X	X	X
WHITE/BLACK	W	X	W	W	W	W	W	W	J	W	W	W	W	V	V	W	W	W
GOLD	—	—	—	—	—	—	—	W	—	—	—	—	—	X	W	—	W	W
ORANGE/BLACK	—	—	—	—	—	W	—	—	—	—	—	—	V	V	V	—	—	—

Stripe Colors:

X—Black

W—White

Code:

V6X

V6W

J—Fluorescent Lime

V—Fluorescent Orange

V6J

V6V

1971 Dodge Dart

- 2-DOOR COUPE
- 2-DOOR HARDTOP
- 4-DOOR SEDAN

TABLE OF CONTENTS

Bench Seat

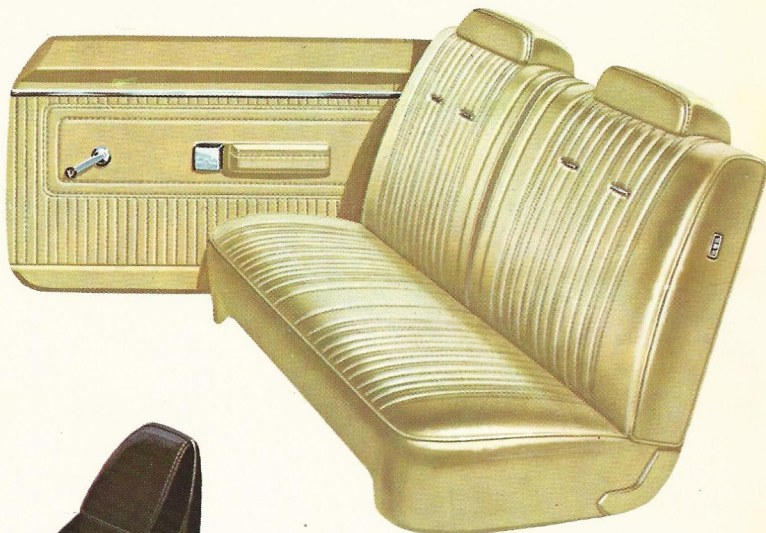
<i>Vinyl—Standard Swinger Hardtops, opt. Custom Sedan</i>	38, 39
<i>Cloth & Vinyl—Standard Custom Sedan</i>	38, 39
<i>Vinyl—Standard Demon 340 & Demon Coupe</i>	40, 41
<i>Cloth & Vinyl—Optional Demon 340 & Demon Coupe</i>	40, 41
<i>Vinyl—Standard Dart Sedan</i>	42, 43

Bucket Seat

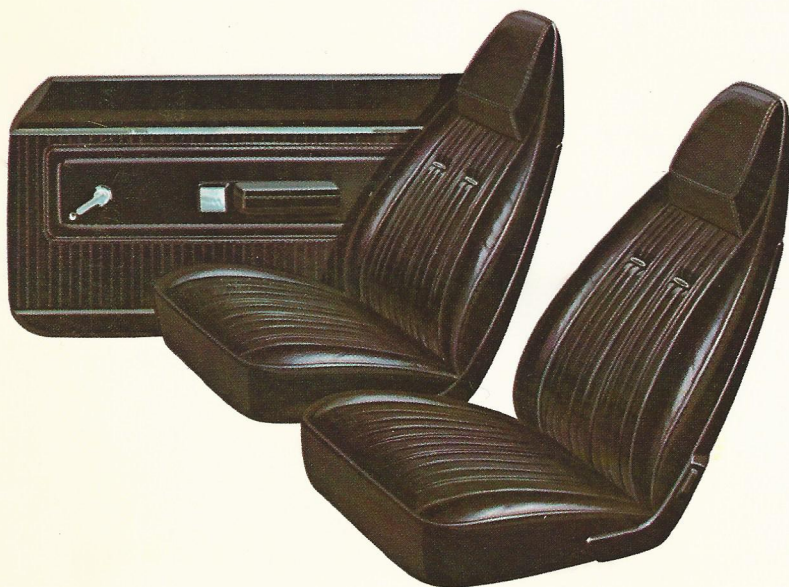
<i>Vinyl—Optional Swinger Hardtops</i>	38, 39
<i>Vinyl—Optional Demon 340 & Demon Coupe</i>	40, 41
<i>Dart Paint Stripe Information</i>	44

Dart Swinger and Dart Custom

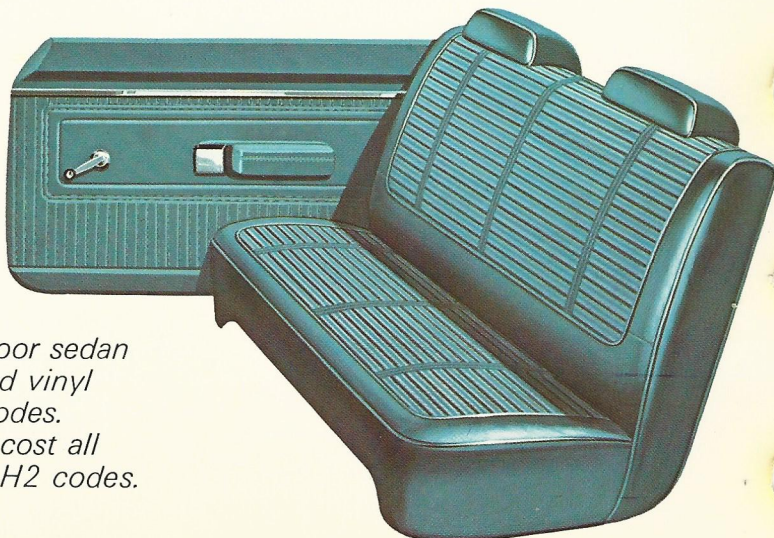
■ 2-DOOR HARDTOP, 4-DOOR SEDAN



■ Dart Swinger 2-door hardtop, standard all vinyl bench seat. H2 codes. Optional at extra cost on the Dart Custom 4-door sedan. H2 codes.



■ Dart Swinger 2-door hardtop, optional at extra cost all vinyl bucket seat. H6 codes. Included with GT package. Code A65.



■ Dart Custom 4-door sedan standard cloth and vinyl bench seat. H1 codes. Optional at extra cost all vinyl bench seat. H2 codes.



Bench Seat Code H2B2

Exteriors: GB2, GB5, GB7, GW3, TX9



Bench Seat Code H2F3

Exteriors: GF3, GF7, GT2, GW3,
TX9, GY8



Bench Seat Code H2X9

Bucket Seat Code H6X9

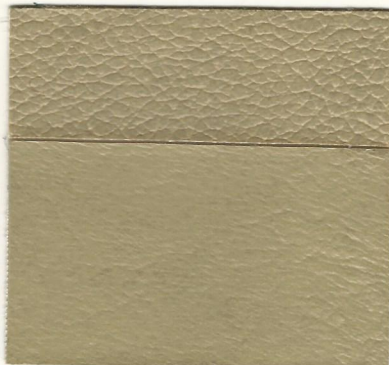
Exteriors: All Dart Colors



Bench Seat Code H2XW
(2-dr. HT only)

Bucket Seat Code H6XW

Exteriors: All Dart Colors



Bench Seat Code H2Y3

Exteriors: GF7, GW3, TX9, GY8, GY9



Bench Seat Code H1B2

Exteriors: GB2, GB5, GB7, GW3, TX9



Bench Seat Code H1F3

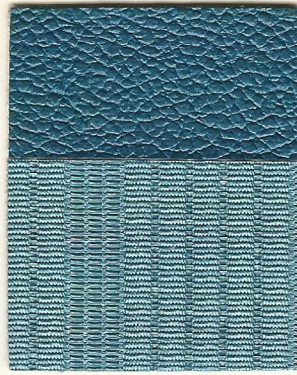
Exteriors: GF3, GF7, GT2, GW3,
TX9, GY8



Bench Seat Code H1X9

Exteriors: All Dart Colors

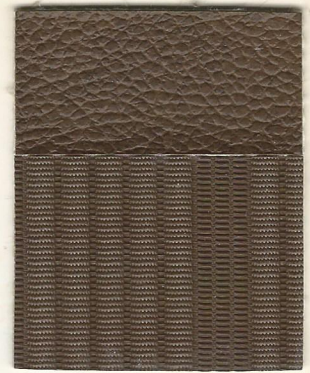
NOTE: Listed are recommended paint and trim combinations; however, any solid exterior paint color is available with any body model. Interior trim selection is restricted to the body styles indicated. Care should be taken when choosing non-recommended paint and trim combinations.



Bench Seat Code E2B7
Exteriors: GB2, GB5, GB7,
GW3, TX9



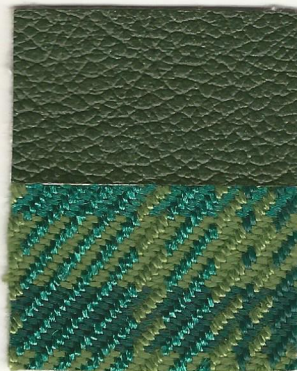
Bench Seat Code E2X9
Exteriors: All Dart Colors



Bench Seat Code E2T7
Exteriors: FE5, GF3, GF7,
GK6, EL5, GT2, EV2,
GW3, TX9, GY8



Bench Seat Code M1B7
Exteriors: GB2, GB5, GB7,
GW3, TX9



Bench Seat Code M1F7
Exteriors: GF3, GF7, GT2,
GW3, TX9, GY8



Bench Seat Code M1XX
Exteriors: All Dart Colors



Bench Seat Code M1X9
Exteriors: FE5, EV2, GW3,
TX9



Bucket Seat Code M6X9
Exteriors: All Dart Colors



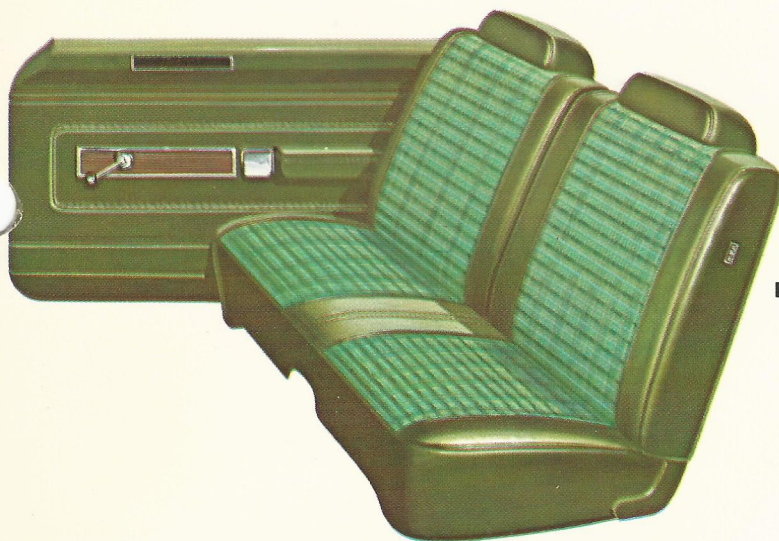
Bucket Seat Code M6XV
Exteriors: FE5, EV2, GW3,
TX9

NOTE: Listed are recommended paint and trim combinations; however, any solid exterior paint color is available with any body model. Interior trim selection is restricted to the body styles indicated. Care should be taken when choosing non-recommended paint and trim combinations.

Demon 340 & Demon

■ 2-DOOR COUPE

- *Demon 340 & Demon 2-door coupes, standard all vinyl bench seat. E2 codes.*



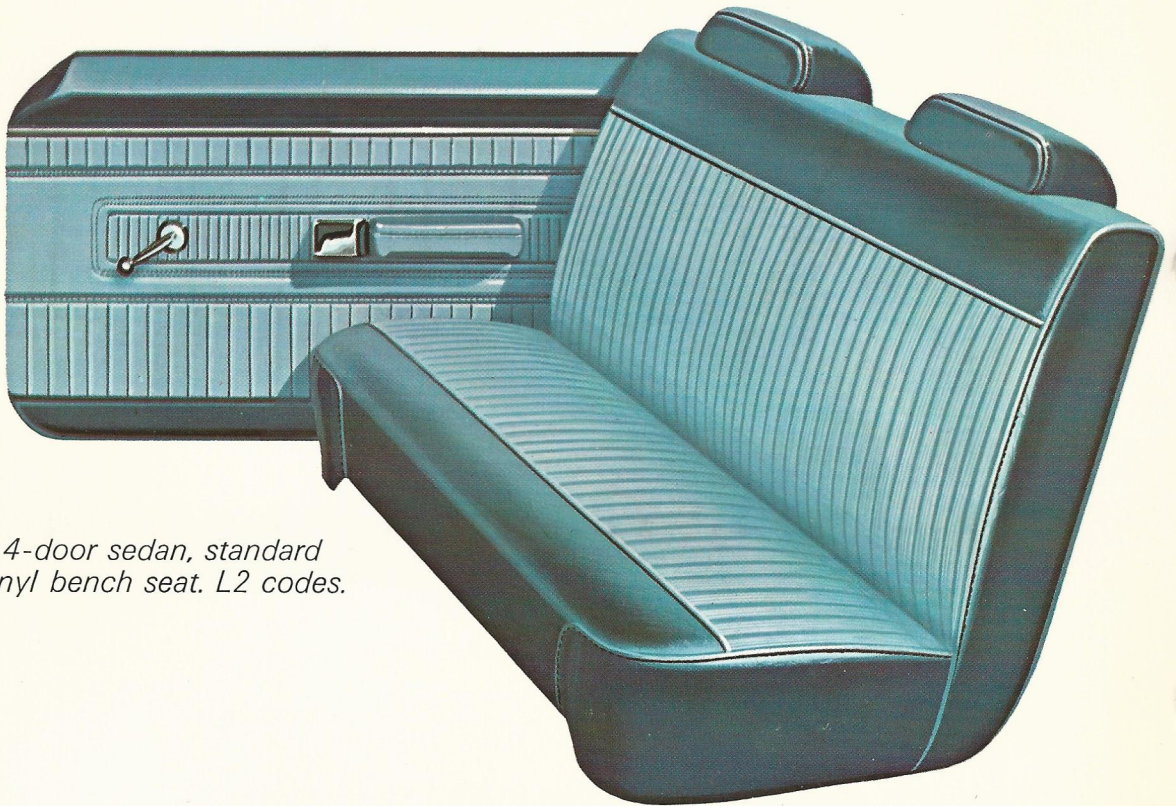
- *Demon 340 & Demon 2-door coupes, optional cloth and vinyl bench seat. M1 codes.*

- *Demon 340 and Demon 2-door coupes, optional all vinyl bucket seats. M6 codes.*

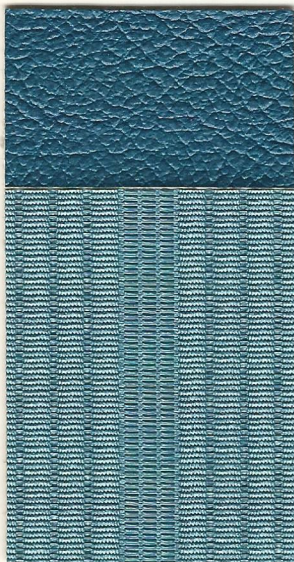


Dart

■ 4-DOOR SEDAN



■ Dart 4-door sedan, standard all vinyl bench seat. L2 codes.



Bench Seat Code L2B7
Exteriors: GB2, GB5, GB7,
GW3, TX9



Bench Seat Code L2F7
Exteriors: GF3, GF7, GT2,
GW3, TX9, GY8



Bench Seat Code L2X9
Exteriors: All Dart Colors

NOTE: Listed are recommended paint and trim combinations; however, any solid exterior paint color is available with any body model. Interior trim selection is restricted to the body styles indicated. Care should be taken when choosing non-recommended paint and trim combinations.

Tape Stripes

(Demon 340 & Demon)

Interior Trim Color	Exterior Colors																	
	GA4	GB2	GB5	GB7	FC7	FE5	GF3	GF7	FJ6	GK6	EL5	GT2	EV2	GW3	TX9	GY3	GY8	GY9
BLUE	—	X	W	W	—	—	—	—	—	—	—	—	—	B	B	—	—	—
GREEN	—	—	—	—	—	—	F	F	—	—	—	X	—	F	F	—	Y	—
TAN	—	—	—	—	—	X	F	F	—	W	X	X	X	X	W	—	Y	—
BLACK	X	X	B	B	W	X	F	F	F	W	X	X	X	X	W	X	Y	Y
WHITE/BLACK	X	X	B	B	W	X	F	F	F	W	X	X	X	X	W	X	Y	Y
ORANGE/BLACK	—	—	—	—	—	X	—	—	—	—	—	—	X	X	W	—	—	—

Stripe Colors:

X—Black

W—White

Code:

V6X

V6W

F—Green

B—Blue

Y—Gold

V6F

V6B

V6Y

BODY SIDE TAPE STRIPE

(STANDARD DEMON 340)

FLAT BLACK CODE V6X

AVAILABLE ALL EXTERIOR COLORS

WHITE CODE V6W

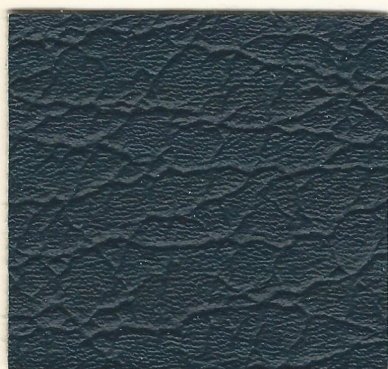
AVAILABLE ALL EXTERIOR COLORS

(EXCEPT BRIGHT WHITE GW3)

Vinyl Roofs

(Optional at extra cost)

- MONACO & POLARA—All Hardtops and 4-door Sedans
- CHARGER—Coupe, 2-door Hardtop “Special Edition” (Canopy Roof Std. on S. E.)
- CORONET—4-door Sedans
- CHALLENGER—Coupe, 2-door Hardtop
- DART—2-door Hardtop and 4-door Sedans
- DEMON 340 & DEMON—Coupes



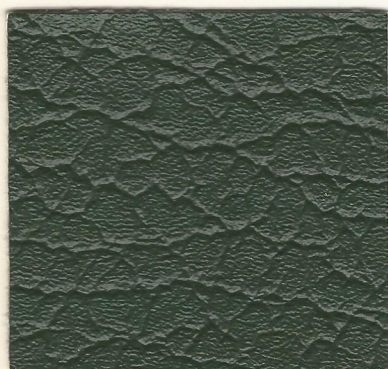
Code V1B—Blue
(Monaco & Polara 2-dr. Hardtop, 4-dr. Hardtop only)
Exteriors: GB2, GB7 with all interiors.
EW1 (blue interiors)



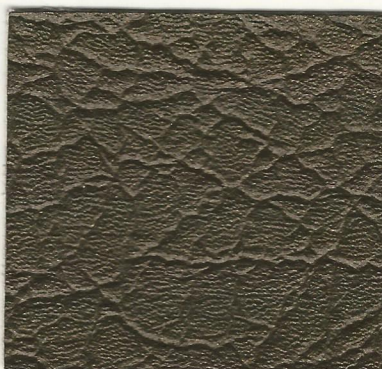
Code V1X—Black
Code V4X—Black Canopy S.E.
Exteriors: Available with all colors



Code V1W—White
Code V4W—White Canopy S.E.
Exteriors: Available with all colors except Bright White GW3



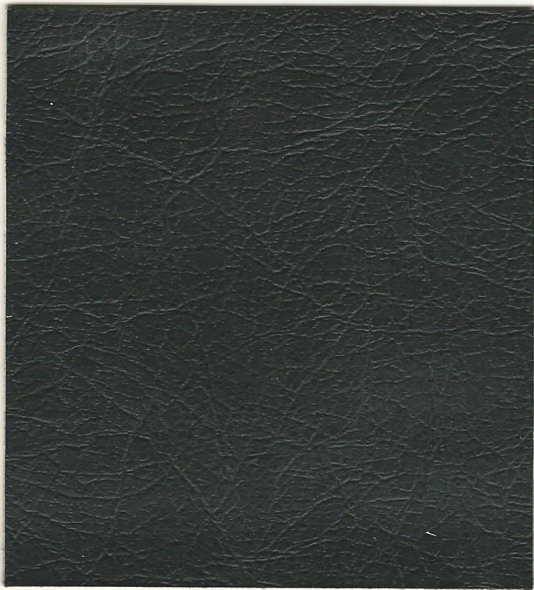
Code V1F—Green
Code V4F—Green Canopy S.E.
Exteriors: GF3, GF7 with all interiors.
EW1, GW3 (green interiors)



Code V1Y—Gold
Code V4Y—Gold Canopy S.E.
(N.A. Monaco & Polara 4-dr. Sedans)
(N.A. Coronet Models)
Exteriors: GY4, GY9 with all interiors

Convertible Tops

■ CHALLENGER



CODE V3X—BLACK
Exteriors: All Challenger Colors



CODE V3W—WHITE
Exteriors: All Challenger Colors

1971 Dodge Sportsman & Tradesman

Table of Contents

<i>Royal Sportsman</i>	48, 49
<i>Custom Sportsman</i>	48, 49
<i>Sportsman</i>	48, 49
<i>Tradesman Vans</i>	48, 49

■ ROYAL SPORTSMAN



- *Royal Sportsman models have an all-vinyl trim in a special biscuit pattern. Color-keyed carpeting is used throughout. The full headliner is also color-keyed. The special biscuit pattern driver and front passenger bucket seats are optional at extra cost in Tradesman Van models.*

■ CUSTOM SPORTSMAN & SPORTSMAN



- *Custom Sportsman and Sportsman models have all-vinyl trim. Custom models have a color-keyed floor mat throughout, while Sportsman models have a black floor mat in the driver's compartment. Custom models have a full headliner, while Sportsman models have a headliner in the driver's compartment only. The driver's bucket seat is standard in the Tradesman Van. The front passenger's bucket seat is an extra-cost option in Tradesman vans.*



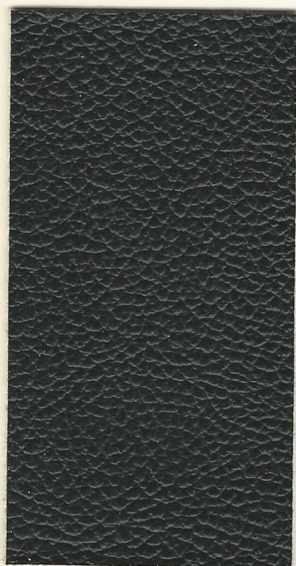
Code KT2
Exteriors: 1263, 8427



Code KT3
Exteriors: 1263, 7544



Code KT4
Exteriors: 1263, 6290



Code KT1
Exteriors: All Sportsman
Colors
(N.A. Royal &
Custom)



Code KT2
Exteriors: Custom Sportsman
1263, 8427
Sportsman
1263, 8427, 8491



Code KT3
Exteriors: Custom Sportsman
1263, 7544
Sportsman
1263, 7544, 7598



Code KT4
Exteriors: Custom Sportsman
1263, 6290
Sportsman
All Colors

1971 Dodge D100-D200 Models

TABLE OF CONTENTS

<i>Custom</i>	52, 53
<i>Adventurer Adventurer Sport</i>	52, 53
<i>Adventurer Special Edition</i>	54, 55
<i>Optional Bucket Seat</i>	54, 55

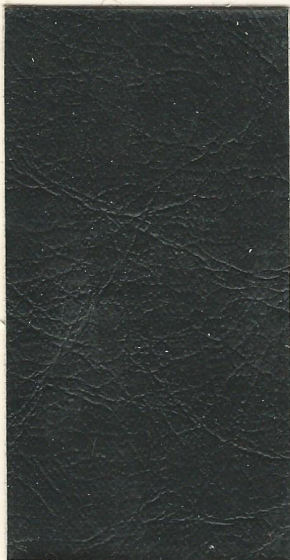
D100-D200 Models



- *Custom. The standard Custom upholstery is all-vinyl and is available in four handsome colors—beige, blue, green and black.*



- *Adventurer & Adventurer Sport. The optional at extra cost Adventurer and Adventurer Sport Packages include deluxe, three-tone upholstery in attractive, grained vinyl with full-foam seat cushion and foam back pad.*



Code KT1
Exteriors: All light-duty colors



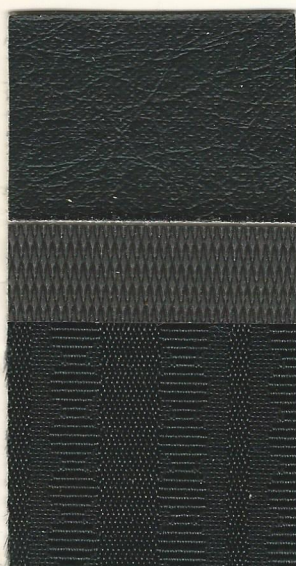
Code KT2
Exteriors: 1263, 8473, 8491



Code KT3
Exteriors: 1263, 7573, 7598



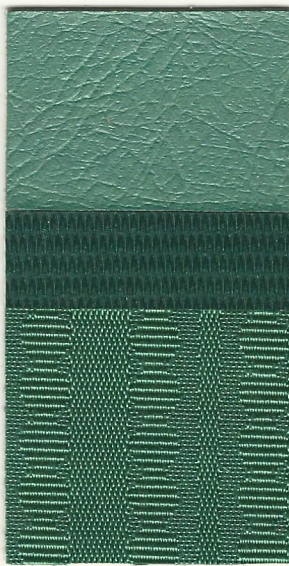
Code KT4
Exteriors: All light-duty colors



Code KT1
Exteriors: All light-duty colors



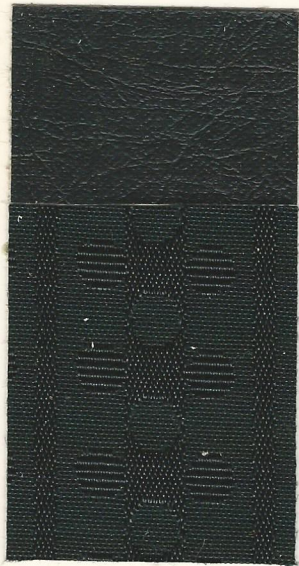
Code KT2
Exteriors: 1263, 8473, 8491



Code KT3
Exteriors: 1263, 7573, 7598



Code KT4
Exteriors: All light-duty colors



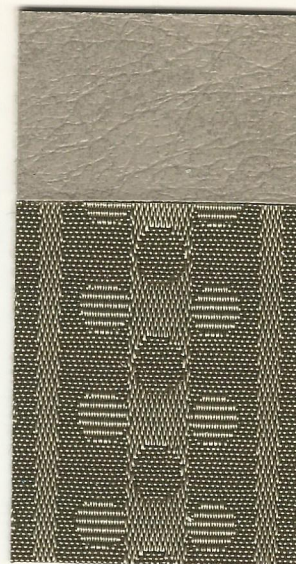
Code KT1
Exteriors: All light-duty colors



Code KT2
Exteriors: 1263, 8473, 8491



Code KT3
Exteriors: 1263, 7573, 7598



Code KT4
Exteriors: All light-duty colors



Code KT1
Exteriors: All light-duty colors



Code KT2
Exteriors: 1263, 8473, 8491



Code KT3
Exteriors: 1263, 7573, 7598



Code KT4
Exteriors: All light-duty colors

D100-D200 Models



- *Adventurer Special Edition. The optional at extra cost Adventurer S.E. Package has an interior that is fully comparable to that of a fine passenger car. The seat cushions are full-foam and the seat-back is foam padded. The upholstery is a rich two-tone vinyl and nylon fabric.*



- *Bucket Seats. The individual, full-foam bucket seats are separated by a padded console that covers a useful storage compartment. The upholstery is rich-looking grained vinyl.*



All product illustrations, specifications and information are based on authorized information. Although all descriptions are believed correct at publication approval, accuracy cannot be guaranteed. Some of the equipment shown on product illustrations is optional, at extra cost. Dodge Division reserves the right to make changes from time to time, without notice or obligation, of colors and materials, and to change or discontinue models.

6

PERFORMANCE EXTERIOR COLORS

Find out how easy it is to really stand out. Clout your eyes and boggle your mind with Dodge Performance Colors for 1971. All of them are available on Demon, Dart, Challenger, Coronet and Charger models. Citron Yella and Top Banana are available on all models.

Plum Crazy
Green Go
Hemi Orange
Butterscotch
Citron Yella
Top Banana

20

REGULAR EXTERIOR COLORS

One of them has to be just right for your uncommonly good-looking 1971 Dodge. Thirteen colors for Demon, Dart, Challenger, Coronet and Charger. Seventeen colors for Monaco and Polara.

BANANA—FY1*
All Models
*Extra Cost Paint

LT. GUNMETAL METALLIC—GA4
All Models



DARK GUNMETAL METALLIC—GA8
Polaris, Monaco

LT. BLUE METALLIC—GB2
All Models

BRIGHT BLUE METALLIC—GB5
Dart, Challenger, Coronet, Charger



DARK BLUE METALLIC—GB7
All Models

PLUM CRAZY—FC7*
Dart, Challenger, Coronet, Charger
*Extra Cost Paint

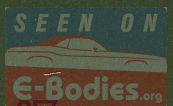
BRIGHT RED—FE5
All Models



BURGUNDY—GE7
Polara, Monaco

MED. GREEN METALLIC—GF3
All Models

DARK GREEN METALLIC—GF7
All Models



MOSS GREEN METALLIC—GJ4
Polara, Monaco

GREEN GO—FJ6*
Dart, Challenger, Coronet, Charger
*Extra Cost Paint

DARK BRONZE METALLIC—GK6
All Models



BUTTERSCOTCH—EL5*
Dart, Challenger, Coronet, Charger
*Extra Cost Paint

TURQUOISE METALLIC—FQ5
Polaris, Monaco

TAN METALLIC—GT2
Dart, Challenger, Coronet, Charger



DARK TAN METALLIC—GT8
Polara, Monaco

HEMI ORANGE—EV2*
Dart, Challenger, Coronet, Charger
*Extra Cost Paint

WHITE—EW1
Polara, Monaco



BRIGHT WHITE—GW3
Dart, Challenger, Coronet, Charger

BLACK—TX9
All Models

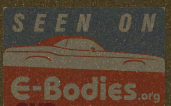
CITRON YELLA—GY3*
All Models
*Extra Cost Paint



GOLD—GY4
Polara, Monaco

GOLD METALLIC—GY8
All Models

DARK GOLD METALLIC—GY9
All Models



14

SPORTSMAN EXTERIOR COLORS

Color your 1971 Royal Sportsman, Custom Sportsman or Sportsman the way you like it best.

13

D100 AND D200 EXTERIOR COLORS

Select the color you prefer for your D100 or D200.

BRIGHT GREEN--7596

MEDIUM BLUE--8473

MEDIUM BLUE METALLIC—8427

MAROON—3353

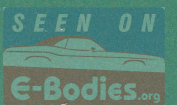
LIGHT BLUE—8491



DARK GREEN—7598

MEDIUM GREEN—7573

MEDIUM GREEN METALLIC—7544



WHITE—1263

TAN METALLIC—5290

BRIGHT YELLOW—2469



MEDIUM BURNT ORANGE—5163

BRIGHT TURQUOISE—7599

BRIGHT RED—3116



MEDIUM TAN—6310

LIGHT BEIGE—6327

CHROME YELLOW—2245



